

READY   
TO RACE

# KTM POWERPARTS OFFROAD 2021

**KTM**

# KTM POWERPARTS OFFROAD 2021

## SYMBOLS KEY

---

CCCU0

Closed Course Competition use only

50STATE

50 State legal

**KTM** *FACTORY RACING*

When you see this symbol, you can rest assured that you've made the best choice, because our Factory Team relies on this KTM PowerParts product.

## DISCLAIMER

All of the items in this catalog have been designed/developed especially for the needs and demands of offroad motorsport. This is why only those KTM PowerParts, where it is explicitly stated to that effect, are approved for use in traffic ("homologised for street use").



## ENGINE

## EXHAUST

2-STROKE  
4-STROKE

## HANDLEBAR INSTRUMENTS ELECTRIC

GRIPS  
LEVERS  
HANDGUARDS  
HANDLEBAR  
HANDLEBAR SUPPORT  
STEERING DAMPER  
INSTRUMENTS / ELECTRIC  
SPECIAL PARTS

## CNC PARTS

ENGINE  
CHASSIS

## PLASTIC PARTS DECALS

PLASTIC PARTS  
DECALS

## SEATS

## FOOTPEGS

## TANKS

## SUSPENSION

## WHEELS

OFFROAD  
SUPERMOTO  
SPECIAL PARTS

## 006

## 014

016  
022

## 028

030  
034  
036  
039  
040  
042  
044  
046

## 050

052  
056

## 058

060  
064

## 068

## 074

## 078

## 084

## 096

098  
100  
102

## CHAINS SPROCKETS

SPROCKETS  
CHAINS  
SPECIAL PARTS

## BRAKES

BRAKE CALIPERS  
BRAKE DISCS  
BRAKE PADS  
SERVICE  
SPECIAL PARTS

## COOLING

RADIATOR  
FANS  
PROTECTION

## PROTECTION

ENGINE PROTECTION 2-STROKE  
ENGINE PROTECTION 4-STROKE  
CHASSIS

## AIR FILTER

## NAVIGATION LUGGAGE

## FREERIDE

## 50 / 65 / 85 SX / SX-E 5

## TOOLS TRANSPORTATION

TOOLS  
STANDS  
TRANSPORTATION

## WP SUSPENSION

## MOTOREX

## 106

108  
111  
112

## 114

116  
117  
120  
121  
122

## 124

126  
127  
128

## 130

132  
134  
140

## 146

## 150

## 156

## 176

## 206

208  
220  
224

## 092 188

## 218



004  
005







## THE RACE TO THE PODIUM STARTS HERE

It's no secret – many races are won or lost in the pits. Pre-race preparation is the key to unlocking every ounce of horsepower, saving every gram of weight, and giving yourself the edge over the competition. It's here where you make or break your chances at grabbing the holeshot.

KTM PowerParts are designed and engineered to intensify your ride by improving the performance, handling, and attitude of your KTM offroad motorcycle. Every part has been sharpened by years of R&D in the pursuit of podiums, ensuring the highest quality, style and function.

The advantage is clear to see. When it comes to pursuing ultimate performance, KTM PowerParts leave no bolt unturned.





006  
007







# ENGINE

FACTORY PISTON

- Optimized friction
  - Only one piston ring
- Special surface coating
  - Higher performance across the entire power band

125 **SX**      16 - 21

ART.-NR.  
**SXS.16.125.907 I**

150 **SX**      16 - 21  
150 **XC-W**    17 - 21

ART.-NR.  
**SXS.16.150.907 I**



FACTORY SPARK PLUG

125 **SX**      00 - 21  
144 / 150 **SX**    07 - 21

- Extremely robust spark plug
  - Center electrode tip made of iridium
  - Reinforced ground electrode (against vibration and breakage)
- Special design with improved anti-sooting characteristic
  - Recommended in combination with factory cylinder heads, factor exhaust systems or factory digital box

ART.-NR.  
**SXS.02.125.071**





## 150 FACTORY KIT

125 SX 16 - 21

– All the parts for the conversion of your 125 SX to a 150 SX;  
so that you are one step ahead of your competitors

ART.-NR.  
SXS.16.150.000



## 300 FACTORY KIT

250 XC-W TPI 20 - 21

– All the parts required for converting your 250 XC-W TPI  
to a 300 XC-W TPI for the open class

– Requires mapping file of 300 XC-W TPI!

ART.-NR.  
557.30.905.144



## 300 FACTORY KIT

250 SX 19 - 21

– All the parts required for converting your 250 SX to a  
300 SX for the open class

– More information on the carburetor jetting can be obtained  
from your authorized dealer

ART.-NR.  
557.30.905.044



REKLUSE EXP 3.0 CENTRIFUGAL FORCE CLUTCH KIT

- Installed in the standard clutch, which means simple, uncomplicated and fast installation
  - Unlimited and total concentration on the perfect line
  - New generation of Rekluse centrifugal clutch with EXP technology
  - Easily adjustable from the outside via the clutch slave cylinder
  - No stalling of the engine in critical situations, such as braking, downhill runs, jumping, or when starting or pushing
- Improved traction, controllable by the throttle alone
  - Slippery, extremely steep sections can be managed more easily & saves time and ensures faster lap times
  - More relaxed, fatigue-free and controlled riding, even over longer distances and in tough terrain
  - No more coupling is required, although it is still possible
  - Special rear brake conversion kit available, allowing braking of the rear wheel with the left hand tested in the toughest conditions

250 **SX** 17 - 21  
250 / 300 **XC / XC-W** 17 - 21  
  
ART.-NR.  
**554.32.900.000**

250 / 350 **XCF-W / EXC-F** 17 - 21  
  
ART.-NR.  
**792.32.900.000**

450 **SX-F / XC-F** 16 - 21  
450 / 500 **XCF-W / EXC-F** 17 - 21  
  
ART.-NR.  
**794.32.900.100**



HINSON INNER CLUTCH HUB



- Improves clutch performance and durability
  - HINSON-typical surface treatment for significantly improved robustness compared to the standard part
  - Very clean running of the clutch, which leads to reduced heat development when the clutch is pulled
- Can be installed in the standard clutch or in combination with other HINSON clutch components
  - CNC milled from high-strength aluminum
  - Improves heat dissipation

250/350 **EXC-F** 17 - 21  
350 **XCF-W** 20 - 21  
  
ART.-NR.  
**792.32.902.000**

250 **SX** 17 - 21  
250/300 **XC / XC-W** 17 - 21  
450 **SX-F / XC-F** 14 - 21  
450/500 **XCF-W / EXC-F** 14 - 21  
  
ART.-NR.  
**781.32.902.000**





## HINSON CLUTCH PRESSURE PLATE

**KTM FACTORY RACING**

- Improves clutch performance and durability
- HINSON-typical surface treatment for significantly improved robustness compared to the standard part
- Very clean running of the clutch, which leads to reduced heat development when the clutch is pulled
- Can be installed in the standard clutch or in combination with other HINSON clutch components
- CNC milled from high-strength aluminum
- Improves heat dissipation

250/350 EXC-F 17 - 21  
350 XCF-W 20 - 21

ART.-NR.

**792.32.903.000**

250 SX 17 - 21  
250/300 XC / XC-W 17 - 21  
450 SX-F / XC-F 14 - 21  
450/500 XCF-W / EXC-F 14 - 21

ART.-NR.

**794.32.903.000**



## SLIPPER CLUTCH

450 SX-F / XC-F 20 - 21

- Prevents rear wheel stamping
- Provides better behavior in curves
- Made of high-strength aluminum

ART.-NR.

**795.32.900.044**



## REAR BRAKE CONVERSION KIT

250 SX 04 - 21	250/300 XC-W 06 - 21	250/350 EXC-F 13 - 21
250/300 XC 06 - 21	350/500 XCF-W 20 - 21	450/500 EXC-F 17 - 21
450 SX-F / XC-F 16 - 21		

- Allows the rear wheel to be braked with the left hand
- Provides additional control in critical riding situations
- For use with the automatic clutch

ART.-NR.

**781.13.900.100**

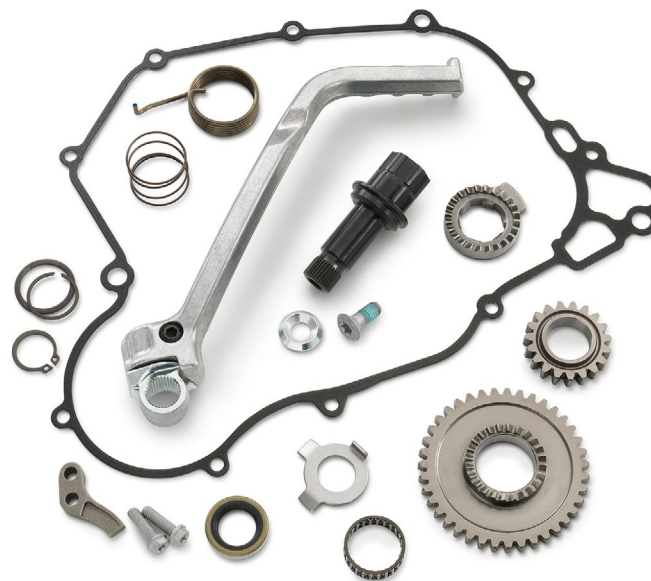


## KICK-STARTER KIT

250 / 300 XC-W 20-21

- All parts required to install the kick-starter system on your motorcycle
- Combination of kick and electric starter system assures that your bike will always start up as quickly as possible

ART.-NR.  
**557.12.945.044**



## LITHIUM ION BATTERY

- |                                                                                                                                                                                                                                                                                                                                                                                                                          |                                                                                                                                                                                                                                                                                                                                                                                                                                                                                                                                 |
|--------------------------------------------------------------------------------------------------------------------------------------------------------------------------------------------------------------------------------------------------------------------------------------------------------------------------------------------------------------------------------------------------------------------------|---------------------------------------------------------------------------------------------------------------------------------------------------------------------------------------------------------------------------------------------------------------------------------------------------------------------------------------------------------------------------------------------------------------------------------------------------------------------------------------------------------------------------------|
| <ul style="list-style-type: none"> <li>- Higher cold current value (CCA) for improved cold start characteristics</li> <li>- Unbeatable cost/weight saving ratio</li> <li>- Mountable in any position, as it does not contains acid</li> <li>- Safe technology and long life</li> <li>- 2.2 lbs lighter than lead-acid battery 773.11.053.000</li> <li>- 3.5 lbs lighter than lead-acid battery 585.11.053.000</li> </ul> | <ul style="list-style-type: none"> <li>- Recommended charging current – 2.5 amps</li> <li>- Maximum charge current for fast charging – 10 amps</li> <li>- Fast charge with high charging current (up to 90 % in 10 min)</li> <li>- Very low self-discharge (max. 5 % per month)</li> <li>- Balanced discharge/charge of all cells through balancer</li> <li>- Contains no heavy metals</li> <li>- When mounting on 12S SX and SX-F models from 2016 onwards, the battery compartment 790.11.955.044 is also required</li> </ul> |
| <p>Technical data:</p> <ul style="list-style-type: none"> <li>- 12 V maintenance-free LiFePo4-battery</li> <li>- Capacity 2.0 Ah</li> </ul>                                                                                                                                                                                                                                                                              |                                                                                                                                                                                                                                                                                                                                                                                                                                                                                                                                 |

ART.-NR.  
**791.11.053.000**











014  
015







# EXHAUST

2-STROKE

4-STROKE

# AKRAPOVIČ "SLIP-ON LINE"

ART.-NR.: 557.05.981.000



CCCU0

- Significantly longer durability
- Made from high grade titanium
- Permanently welded brackets
- Significantly more torque
- Significantly more performance
- Extremely durable
- Complies with FIM regulations
- Profiled surface of the outer sleeve
- Embossed AKRAPOVIČ logo on the silencer cap
- Look identical to that of our Factory Racing Team





## AKRAPOVIČ "SLIP-ON LINE"

CCCUG

- Made from high grade titanium
- Uncompromising race look
- Permanently welded brackets
- Complies with current FIM noise regulations
- Significantly more torque
- Significantly more performance
- Substantial weight saving
- AKRAPOVIČ logo sticker on silencer

125 / 150 **SX** 19 - 21  
150 **XC-W** 20 - 21

ART.-NR.  
505.05.979.000

250 **SX** 19 - 21  
250 / 300 **XC** 19 - 21

ART.-NR.  
555.05.979.000



## FMF TITAN POWERCORE 2.1 SILENCER

CCCUG

- Silencer housing made of high-grade titanium
- Titanium silencer cap
- Rich sound
- Low noise level
- Easy to mount
- Perfect fit
- Extremely low weight
- Blue anodized outer sleeve
- Recommended in combination with a FMF Fatty pipe for a perfectly matched full system with optimum performance.

125 / 150 **SX** 19 - 21  
150 **XC-W** 20 - 21

ART.-NR.  
505.05.979.003

250 **SX** 19 - 21  
250 / 300 **XC** 19 - 21  
250 / 300 **XC-W** 20 - 21

ART.-NR.  
555.05.979.003



## FMF TURBINECORE 2.1 SILENCER

CCCUG

- Outer sleeve made from the finest aluminum
- Full sound despite low noise level
- Lightweight
- Perfect fit
- Easy to install
- Specially developed for motocross-use
- Internal spark arrestor

150 **XC-W** 20 - 21

ART.-NR.  
517.05.981.004

250 **SX** 19 - 21  
250 / 300 **XC** 19 - 21  
250 / 300 **XC-W** 20 - 21

ART.-NR.  
555.05.979.004





FMF POWERCORE 2.1 SILENCER

CCCU0

- Specially developed for use in motocross
  - Silencer housing made of high-grade aluminum
  - Rich sound
  - Low noise level
  - Easy to mount
- Perfect fit
  - Reduced weight

Recommended in combination with a FMF Fatty pipe for a perfectly matched full system with optimum performance.

125 / 150 **SX** 19 - 21  
150 **XC-W** 20 - 21  
  
ART.-NR.  
**505.05.979.002**

250 **SX** 19 - 21  
250 / 300 **XC** 19 - 21  
250 / 300 **XC-W** 20 - 21  
  
ART.-NR.  
**555.05.979.002**



FMF FATTY EXPANSION CHAMBER

CCCU0

- Extra strong sheet steel
  - Nickel-plated surface
  - Wide, even engine speed range
  - Higher speed
- More traction
  - Better throttle control
  - Combination with FMF silencer recommended

125 / 150 **SX** 19 - 21  
  
ART.-NR.  
**505.05.907.000**

250 **SX** 19 - 21  
250 / 300 **XC** 19 - 21  
250 / 300 **XC-W** 20 - 21  
  
ART.-NR.  
**555.05.907.000**



FMF FACTORY FATTY EXPANSION CHAMBER

CCC00

- Extra strong sheet steel
- Untreated surface
- Wide, even engine speed range
- Higher speed
- More traction
- Better throttle control
- Uncompromising race look
- Combination with FMF silencer recommended

125 / 150 **SX** 19 - 21

ART.-NR.  
505.05.907.001

150 **XC-W** 20 - 21

ART.-NR.  
517.05.907.001

250 **SX** 19 - 21

250 / 300 **XC** 19 - 21

250 / 300 **XC-W** 20 - 21

ART.-NR.  
555.05.907.001



EXPANSION CHAMBER GUARD

250 / 300 **SX / XC** 19 - 21

250 / 300 **XC-W** 20 - 21

- High stiffness and strength
- 80% lighter than steel with the same load-bearing capacity
- Elegant look
- Low thermal expansion
- Made of high-quality carbon
- High long-term temperature stability
- Non-corrosive
- Maximum protection against falls, roost, branches, etc.
- Can only be fitted with a standard header

ART.-NR.  
557.05.994.000









## AKRAPOVIČ "SLIP-ON LINE"

CCC00

- Made from high grade titanium
- Uncompromising race look
- Permanently welded brackets
- Complies with current FIM noise regulations
- Significantly more torque
- Significantly more performance
- Substantial weight saving
- AKRAPOVIČ logo sticker on silencer

250 SX-F/XC-F  
450 SX-F/XC-F

19 - 21  
19 - 21

350 SX-F/XC-F

19 - 21

ART-NR.

ART-NR.  
795.05.979.000

793.05.979.000



## HEAT PROTECTION

**KTM** FACTORY RACING

SX-F/XC-F

19 - 21

- High stiffness and strength
- Extremely light
- Extremely durable
- Low thermal expansion
- High long-term temperature stability
- Maximum protection against falls, roost, branches, etc.
- Visual highlight
- Helps protect against heat and unwanted contact

ART-NR.

795.05.994.000





# AKRAPOVIČ "SLIP-ON LINE"

ART.-NR.: 256.05.981.500



## 50STATE

- Manufactured from high-grade titanium
- Profiled surface of the outer sleeve
- Increased durability and resistance
- Embossed Akrapovic logo on the end cap
- Permanently welded attachment points
- Substantial weight savings

Your desire is our objective: more power and torque, uncompromising race looks, significant weight saving

The answer: Akrapovic "EVOLUTION LINE"

- More power and torque
- Identical look to our Factory Team
- Manufactured entirely of high-grade titanium
- Weight savings: approx. 2.2 lbs
- Additional resonance body for optimum power delivery
- Manifold flow optimized for production engine

- Tuned to comply with the currently valid FIM noise regulations
- AKRAPOVIČ logo sticker on main silencer

For the 250 SX-F emphasis in power delivery was placed on an increase in power and torque in the upper speed range. Due to the increase in output in the upper speed range a modified power and torque results in the lower speed range. This means a slightly later, but as a result more spontaneous onset of full engine power from an engine speed of 6000 rev/min.



## AKRAPOVIČ "EVOLUTION LINE"

CCCUG

**KTM** FACTORY RACING

- Manifold routing optimally adapted to the production engine
- Uncompromising race look
- Additional expansion chamber for smooth power delivery
- Manufactured entirely from high-grade titanium
- Complies with current FIM noise regulations
- Complies with current AMA noise regulations
- Significantly more torque
- Significantly more performance
- Substantial weight saving
- AKRAPOVIČ logo sticker on silencer

250 SX-F/XC-F 19-21  
350 SX-F/XC-F 19-21

450 SX-F/XC-F 19-21

ART-NR.  
795.05.900.044

ART-NR.  
791.05.900.044



**AKRAPOVIČ "RACING LINE"**

CCCÜ0

- Significantly longer durability
- Manifold routing optimally adapted to the production engine
- Additional expansion chamber for smooth power delivery
- Stainless steel header
- Silencer housing made of high-grade titanium
- Complies with current FIM noise regulations
- Complies with current AMA noise regulations
- Significantly more torque
- Significantly more performance
- Extremely durable
- AKRAPOVIČ logo sticker on silencer
- Look identical to that of our Factory Racing Team

250 SX-F/XC-F  
350 SX-F/XC-F19 – 21  
19 – 21

ART.-NR.

**791.05.901.044**

450 SX-F/XC-F

19 – 21

ART.-NR.

**795.05.901.044****FMF FACTORY 4.1 RCT SILENCER**

CCCÜ0

- Silencer housing made of high-grade titanium
- Carbon silencer cap
- Mounting also possible with original header
- Significantly more torque
- Substantial weight saving
- Noticeable performance enhancement
- Blue anodized outer sleeve
- In connection with an FMF Megabomb header even further increase in rideability and power output can be achieved.

250 SX-F/XC-F

19 – 21

ART.-NR.

**791.05.979.003**

350 SX-F/XC-F

19 – 21

450 SX-F/XC-F

19 – 21

ART.-NR.

**795.05.979.003****FMF POWERCORE 4 SILENCER**

CCCÜ0

- Made of the highest quality materials
- Significantly more performance
- Improved torque curve

250 SX-F/XC-F

19 – 21

ART.-NR.

**791.05.979.002**

350 SX-F/XC-F

19 – 21

450 SX-F/XC-F

19 – 21

ART.-NR.

**795.05.979.002**



FMF MEGABOMB HEADER

CCCU0

- Manifold routing optimally adapted to the production engine
- Resonator chamber for optimum torque distribution and noise reduction
- Manufactured entirely from high-grade titanium
- Tangible performance boost over the entire engine speed range
- Highest quality workmanship

250 SX-F/XC-F	19-21	350 SX-F/XC-F	19-21	450 SX-F/XC-F	19-21
ART-NR. 791.05.907.500		ART-NR. 793.05.907.500		ART-NR. 795.05.907.500	

FMF MEGABOMB HEADER (STAINLESS STEEL)

CCCU0

- Increased performance flow, and less sound
- Made from extra strong, durable stainless steel
- Manifold routing optimally tuned to match the production engine
- Premium machining
- A resonance body is also used to help ensure optimal torque distribution and contribute to noise reduction

250 SX-F/XC-F	19-21	350 SX-F/XC-F	19-21	450 SX-F/XC-F	19-21
ART-NR. 791.05.907.501		ART-NR. 793.05.907.501		ART-NR. 795.05.907.501	









028  
029







# HANDLEBAR INSTRUMENTS ELECTRIC

GRIPS  
LEVERS  
HANDGUARDS  
HANDLEBAR  
HANDLEBAR SUPPORT  
STEERING DAMPER  
INSTRUMENTS / ELECTRIC  
SPECIAL PARTS

LOCK-ON GRIP SET

SX/XC	17 - 21	XC-W	17 - 21
SX-F/XC-F	16 - 21	XCF-W/EXC-F	17 - 21

- Right grip permanently glued to the throttle grip
  - Left grip with aluminum clamping ring for fixing on the handlebar
- Inconvenient gluing and securing with wire no longer necessary

ART.-NR  
■ 790.02.924.100 (CLOSED END)



LOCK-ON GRIP SET

SX/XC	17 - 21	XC-W	17 - 21
SX-F/XC-F	16 - 21	XCF-W/EXC-F	17 - 21

- Right grip permanently glued to the throttle grip
  - Left grip with aluminum clamping ring for fixing on the handlebar
- Inconvenient gluing and securing with wire no longer necessary

ART.-NR  
■ 790.02.923.000 (OPEN END)    ■ 790.02.121.100 (OPEN END)    ■ 790.02.923.100 (OPEN END)



GRIP SET

- Combines the durability of the KTM standard grips with the comfort of the soft KTM grips
- Harder orange material on the inside and on the grip ends for long durability
  - Softer black material on the outside for increased comfort

ART.-NR  
630.02.021.100 (CLOSED END)    630.02.021.200 (OPEN END)





## GRIP SET

- Developed according to the requirements of our factory drivers
- Less stress when riding
- Objective: comfort AND safety
- Ergonomic contour adapted to the shape of the hand
- for maximum comfort
- Half waffle grip
- For a secure grip
- Three areas for the metal wire locking

ART.-NR.

548.02.021.000 (SOFT)

548.02.021.100 (MEDIUM)



## GRIP GLUE

- Perfect hold for your grips
- Contents: 20 g

ART.-NR.

000.62.030.051



## THROTTLE TWIST GRIP TUBE

<b>SX/XC</b>	17 - 21	<b>XC-W</b>	17 - 21
<b>SX-F/XC-F</b>	16 - 21	<b>XCF-W/EXC-F</b>	17 - 21

- Gives you the option of using traditional grips on models that come standard with lock-on grips

ART.-NR.

790.02.013.100



MUD GRIPS

- For a secure grip
- Maximum grip on the hand grip even in extremely muddy conditions

ART-NR.  
781.02.922.000



GRIP DONUT SET

- Coated neoprene ring
- Simply pulled over the grips

ART-NR.  
U69.51.716



GRIP PROTECTION SET

- Helps prevent dirty grips

ART-NR.  
SXS.05.125.600



GRIP HANDLE

125 / 150 SX / XC	19 - 21	SX-F / XC-F	19 - 21
250 SX / XC	19 - 21	XC-W / XCF-W / EXC-F	20 - 21

- Makes it easier to stand your motorcycle up
- Made of high-strength aluminum
- Essential under extreme off-road conditions
- Fastened to silencer support on the rear frame

ART-NR.  
791.12.917.044





## HANDLEBAR MUFFS

- Never again cold fingers!
- Mounting over handlebar and switches

- Better control during winter ride-outs

ART.-NR.

797.02.908.000



## GRIP HEATER

XC-W/XCF-W/EXC-F

- Warm hands, no matter what the weather

ART.-NR.

781.12.964.000



## SUPPORTING STRAP (FRONT)

SX/XC	13 - 21	XC-W	14 - 21
SX-F/XC-F	13 - 21	XCF-W/EXC-F	14 - 21

- Specially developed for extreme conditions
- Strap made from high-strength nylon

- Makes it easier to stand your motorcycle up

ART.-NR.

787.12.916.000



## SUPPORTING STRAP (REAR)

**KTM** FACTORY RACING

SX/XC	19 - 21	XC-W	20 - 21
SX-F/XC-F	19 - 21	XCF-W/EXC-F	20 - 21

- Specially developed for extreme conditions
- Strap made from high-strength nylon

- Makes it easier to stand your motorcycle up

ART.-NR.

797.12.917.000



Ever had to give up during the race because of a broken clutch or brake lever? That will never happen again – these levers are designed to fold away on contact with the ground.

FLEX CLUTCH AND BRAKE LEVER

- Elegant anodized surface
- Visual highlight with technical and ergonomic added value

FLEX CLUTCH LEVER

SX/XC	06 - 21
SX-F/XC-F	06 - 21
XC-W	06 - 21
XCF-W/EXC-F	06 - 21

ART.-NR.  
787.02.931.044 / 04 <sup>(1)</sup>

- The brake or clutch fitting rotates in the event of a fall
- Suitable for all hydraulic BREMBO® brake systems

FLEX BRAKE LEVER

SX/XC	14 - 21
SX-F/XC-F	14 - 21
XC-W	14 - 21
XCF-W/EXC-F	14 - 21

ART.-NR.  
787.13.902.044 / 04 <sup>(2)</sup>





DO YOU KNOW about the benefits of forged brake and clutch levers from KTM PowerParts?

- Manufactured from high-strength aluminum, forged and then CNC-machined
- This extensive production process guarantees a long service life,

- maximum flexibility and a precise fit
- Ergonomically perfected shape (the result of years of racing experience)
- Predefined breaking point
- Orange anodised

## CLUTCH LEVER

SX/XC	06 - 21	XC-W	06 - 21
SX-F/XC-F	06 - 21	XCF-W/EXC-F	06 - 21

- CNC milled from high-strength aluminum
- Elegant anodized surface
- Visual highlight with technical and ergonomic added value
- Adjustable grip width

- The brake or clutch fitting rotates in the event of a fall
- Ergonomically perfect shape (the result of years of racing experience)
- Suitable for all hydraulic BREMBO® clutch mountings

ART.-NR.

780.02.931.200 / 04



## BRAKE LEVER

SX/XC	14 - 21	XC-W	14 - 21
SX-F/XC-F	14 - 21	XCF-W/EXC-F	14 - 21

- CNC milled from high-strength aluminum
- Elegant anodized surface
- Visual highlight with technical and ergonomic added value

- Adjustable grip width
- The brake or clutch fitting rotates in the event of a fall

ART.-NR.

787.13.992.044 / 04



## HANDGUARD KIT

SX/XC  
SX-F/XC-F

XC-W  
XCF-W/EXC-F

- Excellent weather protection
- Closed design
- 2-component plastic handguard
- Black middle section = maximum strength for

- optimum protection
- Colored top and bottom parts = highly flexible under the roughest conditions
- Improved optics

ART.-NR.

- 603.02.179.100 / 30 (HIGH VERSION)
- 603.02.179.000 / EB (HIGH VERSION)
- 603.02.179.100 / AB (HIGH VERSION)

- 780.02.079.200 / 30 (LOW VERSION)
- 780.02.079.100 / EB (LOW VERSION)
- 780.02.079.200 / AB (LOW VERSION)



## HANDGUARD

SX/XC  
SX-F/XC-F

XC-W  
XCF-W/EXC-F

- Uncompromising race look
- Extremely light
- Open design
- 2-component plastic handguard
- Black middle section = maximum strength for optimum protection

- Colored top and bottom parts = highly flexible under the roughest conditions
- Mounting not possible with Twinwall handlebars
- Fastening directly on the handlebar or with a special support directly on the fittings

ART.-NR.

- 796.02.979.000 / EB
- 796.02.979.000 / 30
- 796.02.979.000 / AB



## WRAP-AROUND HANDGUARD KIT

SX/XC  
SX-F/XC-F

XC-W  
XCF-W/EXC-F

- Made of sturdy plastic
- Converts the originally open handguards into a closed version

- Compatible also with handguards 796.02.979.000/EB/AB/30 and 721.02.979.000/EB/AB/30

ART.-NR.

796.02.979.044





**WRAP-AROUND HANDGUARD KIT**SX/XC  
SX-F/XC-FXC-W  
XCF-W/EXC-F

- Made of sturdy plastic
- Converts the originally open handguards into a closed version
- Mounting independent of the lever mounting, directly to the handlebar

- Compatible also with handguards 796.02.979.000/EB/AB/30 and 721.02.979.000/EB/AB/30

ART.-NR.

**791.02.984.000****WRAP-AROUND HANDGUARD KIT**SX/XC  
SX-F/XC-FXC-W  
XCF-W/EXC-F

- Extremely sturdy aluminum brackets
- Prevents broken levers

- Including all required assembly materials

ART.-NR.

**797.02.984.044****WRAP-AROUND HANDGUARD KIT**SX/XC  
SX-F/XC-FXC-W  
XCF-W/EXC-F

- Made of robust plastic
- Fastening independent of fittings directly on the handlebars

- To convert the open, standard handguards to a closed version

ART.-NR.

■ 791.02.979.000 / EB

■ 791.02.979.000 / 30

□ 791.02.979.000 / AB



## HANDGUARD KIT

SX/XC  
SX-F/XC-F

XC-W  
XCF-W/EXC-F

- Excellent weather protection
- Maximum protection against falls, roost, branches, etc.
- Indispensable companion for heavy off-road and Supermoto use
- Wide, generous design in combination with sturdy aluminum bracket
- Helps prevent broken levers
- Made of robust plastic

ART.-NR.

■ 797.02.979.000 / EB

■ 797.02.979.000 / 30

□ 797.02.979.000 / AB



## HANDGUARD BUSHING KIT

SX/XC 14-21

SX-F/XC-F 14-21

- To make the mounting of the wrap-around handguard kit 797.02.984.044 resp. of the handguard kits 797.02.979.000/30/28/EB easier
- Increases the space between alu-guard and hand brake cylinder

ART.-NR.

797.02.988.044





## RENTHAL TWINWALL HANDLEBAR

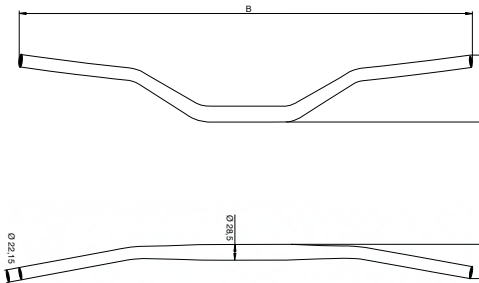
**KTM** FACTORY RACING

- The Twinwall, in the KTM orange design
- Two handlebars in one
- The exterior ensures maximum resistance to external damage (e.g. fall)
- Additionally hard anodized against corrosion
- The interior, made of a special alloy, is also hard anodized to protect it from damage by the handlebar controls

ART.-NR.  
795.02.901.000 / 04 (RENTHAL TWINWALL 996)

- Nylon inserts in the inner tube allow thinner walls
- Very good flex properties
- Comes with handlebar pad
- Dimensions 795.02.901.000/04:  
A = 118 mm, B = 811 mm, C = 74 mm
- Dimensions U6.951.393:  
A = 104 mm, B = 811 mm, C = 74 mm

U6.951.393 (RENTHAL TWINWALL 999)



## HANDLEBAR

- Tested in complex and specially-developed test cycles
- Made of high-strength aluminum

ART.-NR.  
548.02.001.300 / 04

- Position markings for easy adjustment
- Dimensions: A = 115 mm, B = 806 mm, C = 62 mm



HANDLEBAR MOUNT

SX/XC	16-21	SX F/XC-F	16-21
ART.-NR.			
790.01.939.031	(31 MM)	790.01.139.036	(36 MM)
790.01.939.041	(41 MM)	790.01.939.046	(46 MM)
790.01.939.051	(51 MM)		



HANDLEBAR RISER

XC-W	-21	XCF-W/EXC-F	-21
Can only be fitted in combination with handlebar support		590.01.039.100 (standard on XC-W models up to MY 2011)	
ART.-NR.			
548.01.043.012	(12 MM)	548.01.043.020	(20 MM)



HANDLEBAR MOUNT KIT

XC-W	13-21	XCF-W/EXC-F	13-21
- Available in five different heights - Included in the kit are 2x handlebar support lower parts and 2x fastening bolts		- The upper parts and bolts required for clamping the handlebar are taken from the original handlebar support	
ART.-NR.			
797.01.939.044	(32 MM)	797.01.939.144	(37 MM)
797.01.939.344	(47 MM)	797.01.939.444	(52 MM)
		797.01.939.244	(42 MM)



HANDLEBAR RISER

EXC / XC-W	13 - 21
These CNC-machined, high-strength aluminum handlebar risers are extremely robust thanks to their special screw fastening (from below) on the triple clamp. Twisting and bending are therefore practically impossible. Use of these handlebar risers is only possible on CNC-machined triple clamps. Available in three different heights.	
ART.-NR.	
777.01.939.010	(10 MM)
777.01.939.030	(30 MM)
	777.01.939.020 (20 MM)





## PROGRESSIVE HANDLEBAR DAMPING SYSTEM (PHDS)

XC-W 13-21 XCF-W/EXC-F 13-21

- CNC milled handlebar mount with damping rubber inserts
- Gentle on wrists and shoulder joints
- Damping of hard shocks
- Absorption of chassis and engine vibrations
- Additional handlebar damping in horizontal direction
- Optimum steering precision
- Further dampers available in three different degrees of hardness (soft, medium, hard) for individual adjustment
- Handlebar height adjustable to 2 positions

ART.-NR.  
SXS.07.125.200



## PROGRESSIVE HANDLEBAR DAMPING SYSTEM (PHDS)

SX/XC 16-21 SX-F/XC-F 16-21

- CNC milled handlebar mount with damping rubber inserts
- Gentle on wrists and shoulder joints
- Damping of hard shocks
- Absorption of chassis and engine vibrations
- Additional handlebar damping in horizontal direction
- Optimum steering precision
- Further dampers available in three different degrees of hardness (soft, medium, hard) for individual adjustment
- Replaces the standard damping rubbers used in the handlebar mount

ART.-NR.  
790.01.939.500



## HANDLEBAR MOUNT BUSHING KIT

SX/XC 16-21 SX-F/XC-F 16-21

- Conversion of the standard damped handlebar mount into a rigid one

ART.-NR.  
790.01.940.144



## FACTORY STEERING DAMPER

- Gain in stability at the front wheel
- Fully adjustable
- Top performance/ price ratio
- Well thought-out mounting of the damper enables individual handlebar adjustment
- 000.50.000.929 handle bar support kit required for use on MY16 and on XC from MY16

ART.-NR.  
770.12.005.000



## PHDS BRACKET FOR FACTORY STEERING DAMPER

- This bracket is required for fitting the progressive handlebar damping system (PHDS) SXS.07.125.200 in conjunction with a steering damper

ART.-NR.  
770.12.005.644



## FACTORY STEERING DAMPER COUNTER BEARING

SX/XC 16-21 SX-F/XC-F 16-21

ART.-NR.  
790.12.970.100



## FACTORY STEERING DAMPER COUNTER BEARING

XC-W 12-21 XCF-W/EXC-F 12-21

ART.-NR.  
772.12.905.444



## FACTORY STEERING DAMPER BRACKET

SX/XC 16-21 SX-F/XC-F 16-21

ART.-NR.  
790.12.950.200



## FACTORY STEERING DAMPER BRACKET

XC-W 12-21 XCF-W/EXC-F 12-21

ART.-NR.  
770.12.005.144





## STEERING DAMPER

- High-end steering damper
- Maximum control on fast tracks
- Gain in stability at the front wheel
- Fully adjustable
- Well thought-out mounting of the damper enables individual handlebar adjustment
- Reduced weight
- Sensitive response behavior
- High speed DCC
- Developed according to the requirements of our factory drivers
- Optimum 25 click setting range
- Proven success with the KTM Works Rally Team

ART.-NR.  
585.12.050.100



## STEERING DAMPER COUNTER BEARING

SX/XC 16-21 SX-F/XC-F 16-21

ART.-NR.  
790.12.970.100



## STEERING DAMPER COUNTER BEARING

XC-W 12-21 XCF-W/EXC-F 12-21

ART.-NR.  
772.12.905.444



## STEERING DAMPER BRACKET

SX/XC 16-21 SX-F/XC-F 16-21

ART.-NR.  
790.12.960.100



## STEERING DAMPER BRACKET

XC-W 12-21 XCF-W/EXC-F 12-21

ART.-NR.  
585.12.050.144



## IGNITION CURVE SWITCH

2-STROKE - 21

– Ignition curve adjustment made easy!

– Comfortable ignition curve adjustment on the handlebar

ART.-NR.  
515.39.974.200



## HOURLMETER

– Know exactly when the next service is due

ART.-NR.  
781.12.920.000



## HOURLMETER BRACKET

FULLSIZE - 21

– To assemble the hour counter on the triple clamp

ART.-NR.  
781.12.920.044





## AUXILIARY WIRING HARNESS

SX/XC	-21	XC-W	-21
SX-F/XC-F	-21	XCF-W/EXC-F	-21

– Enables power consumers such as grip heater or radiator fans to be installed on SX or XC as well

– The power consumer is now connected directly to the battery. Consequently, the battery is also drained when the engine is not running, unless the consumer is switched off

ART.-NR.

777.11.979.000



## SUPPLEMENTARY WIRING HARNESS

SX/XC	-21	XC-W	-21
SX-F/XC-F	-21	XCF-W/EXC-F	-21

– The Y-distributor allows you to connect two power consumers to auxiliary wiring harness 777.11.979.000

ART.-NR.

777.11.979.010



## SUPPLEMENTARY WIRING HARNESS

SX/XC	-21	XC-W	-21
SX-F/XC-F	-21	XCF-W/EXC-F	-21

– The Y-distributor allows you to connect two power consumers to auxiliary wiring harness 777.11.979.000

– The connected power consumer can be switched off with the integrated switch  
– This prevents the battery from being drained unnecessarily

ART.-NR.

777.11.979.044



## HANDLEBAR PAD

- Provides optimum protection
- Already mandatory in many competitions

- Visual highlight

ART.-NR.

SXS.07.250.800



## HANDLEBAR PAD

- Provides optimum protection
- Already mandatory in many competitions
- Visual highlight
- With the integrated card holder you always have

- the time in view
- A small extra pocket allows you to stow small items
- Can also be fitted in combination with the PHDS-handlebar support

ART.-NR.

790.02.901.050



## SMARTPHONE HANDLEBAR PAD

- Protects your expensive smartphone from rain, dust or mud
- Touchscreen remains fully functional
- Optimal solution for quickly and securely attaching the smartphone to the vehicle
- Handlebar pad and smartphone holder in one
- Smartphone cover with velcro fastener attached to the

- handlebar pad
- Smartphone can be easily removed with its cover
- For Smartphones up to 160 x 80 mm
- Comes with two separate protective strips in case the sleeve is not used
- Smartphone not included!

ART.-NR.

797.02.902.000



## MIRROR

CCCUC

XC-W -21

XCF-W -21

– Exceptionally robust

– Extremely light

ART.-NR.

502.12.040.000 /30



## HANDLEBAR ENDS

– CNC milled from high-strength aluminum

– Elegant anodized surface

– Visual highlight

– Helps prevent the hand grips from chafing in the event of a fall

ART.-NR.

548.02.005.000 (ORANGE / ALUMINUM / ANODIZED)



## CLAMP

– CNC milled from high-strength aluminum

– Elegant anodized surface

– Visual highlight

– Including plastic insert

– The brake or clutch fitting rotates in the event of a fall

– Reduces the risk of a lever being broken

– Suitable for all BREMBO® and FORMULA brake and clutch assemblies

ART.-NR.

777.02.944.000





# LED-HEADLIGHT

XC-W

14-21

XCF-W

14-21

**ART.-NR.: 796.14.901.100**



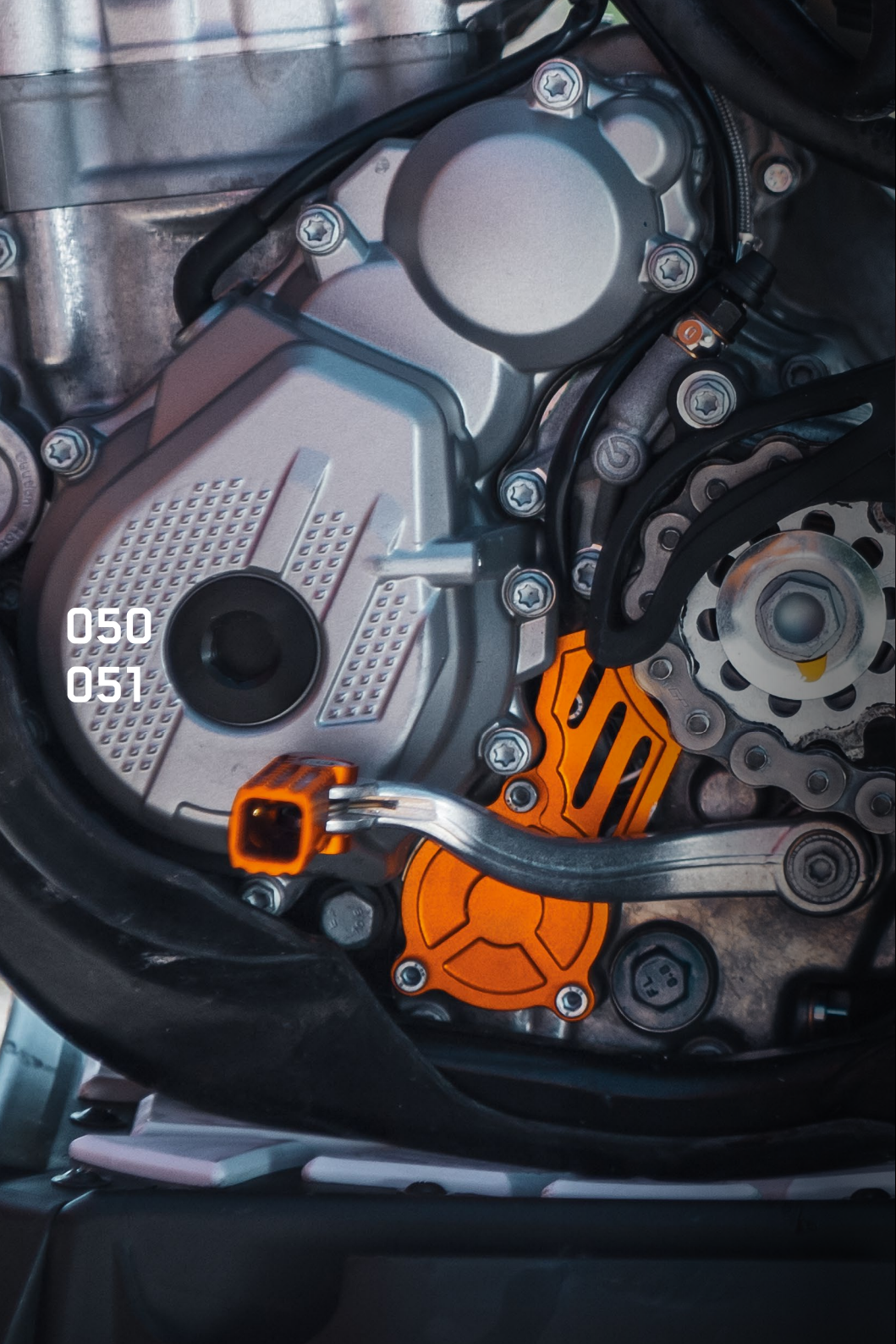
CCC00

- LED technology, specially developed for use with the Enduro
- Plug & Play mounting
- Very high light output
- Light intensity 1,500 lm
- Light color approx. 5,500 K
- Can be installed in the standard headlight mask
- Exceptionally robust









050  
051







# CNC PARTS

ENGINE  
CHASSIS

DID YOU KNOW that all KTM CNC parts are manufactured from high grade aluminum, which not only looks great but can also stand up to the toughest loads? The original factory look, anodized aluminum

KTM PowerParts are just the thing to give your KTM that something special.

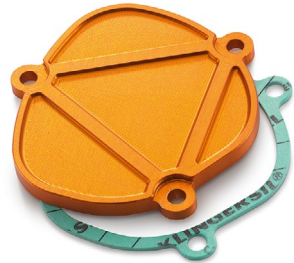
FACTORY CONTROL COVER

125 /150 SX	16 - 21	150 XC-W	17 - 21
- CNC milled from high-strength aluminum		- Visual highlight	
- Elegant anodized surface			
ART.-NR. <b>504.37.905.044</b>			



FACTORY CONTROL COVER

250 SX / XC	07 - 21	300 XC / XC-W	08 - 21
250 XC-W	07 - 21		
— CNC milled from high-strength aluminum		— Visual highlight	
— Elegant anodized surface			
ART.-NR.			
548.37.905.044			



OIL FILTER COVER

**KTM** FACTORY RACING

250 SX-F / XC-F	13 – 21	450 SX-F / XC-F	16 – 21	350 EXC-F / XCF-W	12 – 21
350 SX-F / XC-F	11 – 21	250 EXC-F / XCF-W	14 – 21	450 / 500 EXC-F	17 – 21
– CNC milled from high-strength aluminum			– Visual highlight		
– Elegant anodized surface					
ART-NR.					
773.38.941.044					





## OIL PLUG

**KTM FACTORY RACING**

- CNC milled from high-strength aluminum
- Elegant anodized surface
- Visual highlight
- Includes drilling for safety wire

ART-NR.

**794.30.920.044**

## FACTORY IGNITION COVER PLUG

250 / 350 **SX-F / XC-F** 11 - 21  
 250 / 350 **EXC-F / XCF-W** 12 - 21

- CNC milled from high-strength aluminum
- Elegant anodized surface
- Visual highlight

ART-NR.

**772.30.902.144**

## OIL PUMP COVER

**KTM FACTORY RACING**

- CNC milled from high-strength aluminum
- Elegant anodized surface
- Visual highlight

250 / 350 **SX-F / XC-F** 16 - 21  
 250 / 350 **EXC-F** 17 - 21

ART-NR.

**792.38.904.044**

450 **SX-F / XC-F** 16 - 21  
 450 / 500 **EXC-F** 17 - 21

ART-NR.

**794.38.904.044**

## WATER PUMP COVER

125 / 150 **SX** 16 - 21150 **XC-W** 17 - 21

- CNC milled from high-strength aluminum
- Elegant anodized surface
- Visual highlight
- The weight-optimized water pump cover ensures maximum water flow

ART-NR.

**504.35.952.044**

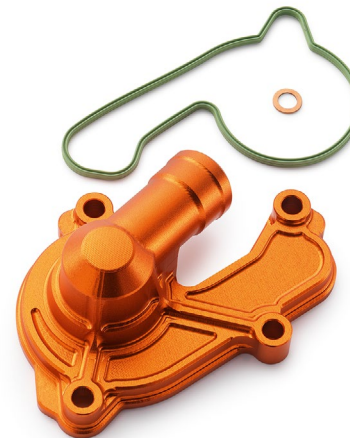
## WATER PUMP COVER

250 / 350 **SX-F / XC-F** 16 - 21  
250 / 350 **XCF-W / EXC-F** 17 - 21

- CNC milled from high-strength aluminum
- Elegant anodized surface
- Visual highlight

ART-NR.  
**792.35.952.044**

- The weight-optimized water pump cover ensures maximum water flow



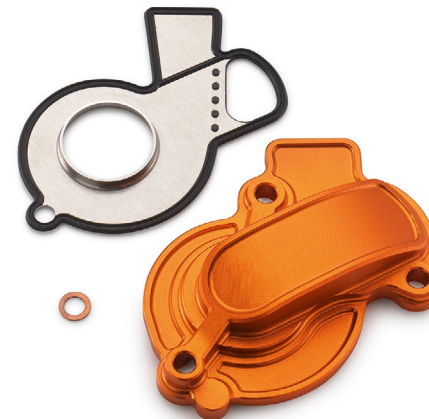
## WATER PUMP COVER

450 **SX-F / XC-F** 16 - 21  
450 / 500 **XCF-W / EXC-F** 17 - 21

- CNC milled from high-strength aluminum
- Elegant anodized surface
- Visual highlight

ART-NR.  
**794.35.952.044**

- The weight-optimized water pump cover ensures maximum water flow



## OUTER CLUTCH COVER

125 / 150 **SX** 16 - 21 150 **XC-W** 17 - 21

- Uncompromising race look
- CNC milled from high-strength aluminum

ART-NR.  
**504.30.926.044**

- Resistant to the toughest stresses and strains

**KTM** FACTORY RACING





**OUTER CLUTCH COVER****KTM** FACTORY RACING250 / 300 **SX / XC** 17 - 21  
250 / 300 **XC-W** 17 - 21

- Uncompromising race look
- CNC milled from high-strength aluminum

– Resistant to the toughest stresses and strains

ART.-NR.

**554.30.926.044****HINSON OUTER CLUTCH COVER****KTM** FACTORY RACING250 / 350 **SX-F / XC-F** 16 - 21  
250 / 350 **XCF-W / EXC-F** 17 - 21

- Uncompromising race look
- CNC milled from high-strength aluminum

– Resistant to the toughest stresses and strains

ART.-NR.

**255.30.826.000****HINSON OUTER CLUTCH COVER****KTM** FACTORY RACING450 **SX-F / XC-F** 16 - 21  
450 / 500 **XCF-W / EXC-F** 17 - 21

- Uncompromising race look
- CNC milled from high-strength aluminum

– Resistant to the toughest stresses and strains

ART.-NR.

**261.30.826.000**

FOOTBRAKE LEVER STEP PLATE

125 /150 <b>SX / XC</b>	16 - 21	<b>SX-F / XC-F</b>	16 - 21
250 <b>SX / XC</b>	17 - 21	<b>XC-W</b>	17 - 21

- CNC milled from high-strength aluminum
- Elegant anodized surface
- Visual highlight

Wider contact surface than standard:  
+8 mm for 125/150 SX/XC-W, SX-F, 450/500 EXC-F  
+16 mm for 250/300 SX, 250/350 EXC-F

ART.-NR.  
**794.13.951.000**



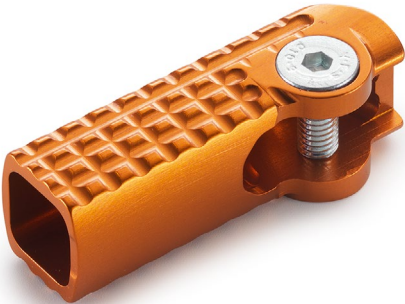
GEAR SHIFT LEVER STEP PLATE

125 /150 <b>SX / XC</b>	16 - 21	<b>SX-F / XC-F</b>	16 - 21
250 <b>SX / XC</b>	17 - 21	<b>XC-W</b>	17 - 21

- CNC milled from high-strength aluminum
- Elegant anodized surface

- Visual highlight
- With 6 mm wider stepping surface than standard

ART.-NR.  
**794.34.931.044**



FACTORY FUEL CAP

- CNC milled from high-strength aluminum
- Not lockable

- Extremely fast and keyless refueling

<b>SX/SX-F</b>	13 - 21	<b>XC-W/XCF-W</b>	13 - 21
----------------	---------	-------------------	---------

ART.-NR.  
**777.07.908.244** <sup>(1)</sup>

ART.-NR.  
**781.07.908.144** <sup>(2)</sup>



(1)



(2)

### FACTORY FUEL CAP VENT

- CNC milled from high-strength aluminum
- Elegant anodized surface
- Visual highlight

ART.-NR.

U6.951.010



### COMPRESSION ADJUSTER

SX/XC/SX-F/XC-F FULLSIZE 16 - 21 EXC-F/XC-W 20 - 21

ART.-NR.

791.01.920.000 / 04



### BRAKE CYLINDER AND CLUTCH RESERVOIR COVER

SX/XC - 21 XC-W - 21  
SX-F/XC-F - 21 XCF-W/EXC-F - 21

- CNC milled from high-strength aluminum
- Elegant anodized surface
- Visual highlight

ART.-NR.

SXS.05.450.210



### FOOTBRAKE CYLINDER COVER

SX/XC 04 - 21 XC-W 04 - 21  
SX-F/XC-F 04 - 21 XCF-W/EXC-F 04 - 21

- CNC milled from high-strength aluminum
- Elegant anodized surface
- Visual highlight

ART.-NR.

U6.951.981



### FOOTBRAKE CYLINDER EXTENDER

SX/XC 04 - 21 XC-W 04 - 21  
SX-F/XC-F 04 - 21 XCF-W/EXC-F 04 - 21

- Increases the volume of the rear master cylinder
- Additional cooling ribs minimize the heating of the brake fluid
- Eliminates "fading" almost completely
- Total height including cover approximately 26.5 mm

ART.-NR.

790.13.961.000







058  
059





# PLASTIC PARTS DECALS

PLASTIC PARTS  
DECALS



PLASTIC PARTS KIT

SX/XC	19 - 21	XC-W	20 - 21
SX-F/XC-F	19 - 21	XCF-W/EXC-F	20 - 21

- Original fairing parts, without the standard decor
  - Optimal basis for creating a unique design
  - Perfect fit
  - Personalize the look of your motorcycle

Kit contains:

  - Fender
  - Air filter cover
- Air filter panel
  - Side fairing
  - Front number plate
  - Shroud set
  - Headlight mask
  - Rear fender
  - Fork protector

ART.-NR.  
☒ 000.10.000.311      ☐ 000.10.000.310



PLASTIC PARTS KIT

SX/XC	19 - 21	SX-F/XC-F	19 - 21
-------	---------	-----------	---------

- Original fairing parts, without the standard decor
  - Optimal basis for creating a unique design
  - Perfect fit
  - Personalize the look of your motorcycle

Kit contains:

  - Fender
- Air filter cover
  - Air filter panel
  - Front number plate
  - Shroud set
  - Rear fender
  - Fork protector

ART.-NR.  
☒ 000.10.000.320      ☐ 000.10.000.319



HEADLIGHT MASK

XC-W	20 - 21	XCF-W/EXC-F	20 - 21
------	---------	-------------	---------

ART.-NR.  
☒ 797.08.001.000 / EB      ☐ 797.08.001.000 / AB





## FRONT NUMBER PLATE

SX/XC	19 - 21	XC-W	20 - 21
SX-F/XC-F	19 - 21	XCF-W/EXC-F	20 - 21

ART.-NR.

- 791.08.007.100 / EB
- 791.08.007.100 / AB



## REAR FENDER

SX/XC	19 - 21	SX-F/XC-F	19 - 21
-------	---------	-----------	---------

ART.-NR.

- 791.08.013.000 / EB
- 791.08.013.000 / AB



## REAR FENDER

XC-W	20 - 21	XCF-W/EXC-F	20 - 21
------	---------	-------------	---------

ART.-NR.

- 797.08.013.000 / EB
- 797.08.013.000 / AB



## AIR FILTER PANEL

SX/XC	19 - 21	XC-W	20 - 21
SX-F/XC-F	19 - 21	XCF-W/EXC-F	20 - 21

ART.-NR.

- 791.06.004.000 / EB
- 791.06.004.000 / AB



## AIR FILTER COVER

SX/XC	19 - 21	XC-W	20 - 21
SX-F/XC-F	19 - 21	XCF-W/EXC-F	20 - 21

ART.-NR.

- 791.06.003.000 / EB
- 791.06.003.000 / AB



## AIR FILTER COVER

SX/XC	19 - 21	XC-W	20 - 21
SX-F/XC-F	19 - 21	XCF-W/EXC-F	20 - 21

– Optimized air flow

ART.-NR.

- 791.06.903.000 / EB (HIGH FLOW)
- 791.06.903.000 / AB (HIGH FLOW)









## LOWER SECTION OF THE AIR FILTER

SX/XC	19 - 21	XC-W	20 - 21
SX-F/XC-F	19 - 21	XC-F-W/EXC-F	20 - 21



ART-NR.

- 791.06.001.000 / EB
- 791.06.001.000 / AB

## AIR FILTER BOX FRONT PART

SX/XC	19 - 21	XC-W	20 - 21
SX-F/XC-F	19 - 21	XC-F-W/EXC-F	20 - 21



ART-NR.

- 791.06.001.010 / EB
- 791.06.001.010 / AB

## SHROUD SET

SX/XC	19 - 21	XC-W	20 - 21
SX-F/XC-F	19 - 21	XC-F-W/EXC-F	20 - 21



ART-NR.

- 791.08.054.000 / EB1
- 791.08.054.000 / AB

## FENDER

125 / 150 SX/XC	16 - 21	SX-F/XC-F	16 - 21
250 / 300 SX/XC	17 - 21	XC-W/XC-F-W/EXC-F	17 - 21



ART-NR.

- 790.08.010.000 / EB
- 790.08.010.000 / AB

## FORK PROTECTOR KIT

125 / 150 SX/XC	16 - 21	SX-F/XC-F	16 - 21
250 / 300 SX/XC	17 - 21	XC-W/XC-F-W/EXC-F	17 - 21



ART-NR.

- 777.01.094.100 / EB
- 777.01.094.100 / AB

## SIDE FAIRING

SX/XC	19 - 21	XC-W	20 - 21
SX-F/XC-F	19 - 21	XC-F-W/EXC-F	20 - 21



ART-NR.

- 791.06.005.000 / EB
- 791.06.005.000 / AB



# FACTORY GRAPHICS KIT

SX/XC 19 - 21  
SX-F/XC-F 19 - 21

XC-W 20 - 21  
XCF-W/EXC-F 20 - 21

ART.-NR.: 795.08.990.000



- Designed to completely change the original look of your motorcycle
- Visual highlight
- Glue the graphics kit directly onto the standard fairing parts
- Perfect fit
- Can be removed without leaving any residue
- Personalize the look of your motorcycle
- Made of the highest quality materials
- Racing look





PORTUGAL SIXDAYS GRAPHICS KIT 2020

SX/XC	19 - 21	XC-W	20 - 21
SX-F/XC-F	19 - 21	XCF-W/EXC-F	20 - 21

- Designed to completely change the original look of your motorcycle
  - Glue the graphics kit directly onto the standard fairing parts
  - Can be removed without leaving any residue
  - Made of the highest quality materials
- Visual highlight
  - Perfect fit
  - Personalize the look of your motorcycle
  - Racing look

ART.-NR.  
797.08.990.000



FORK PROTECTOR STICKER SET

SX/XC	15 - 21	XC-W	16 - 21
SX-F/XC-F	15 - 21	XCF-W/EXC-F	16 - 21

- For use with an open fork protector

ART.-NR.  
790.01.994.050



HANDGUARD STICKER SET

- Visual highlight
- Perfect fit

ART.-NR.  
777.02.990.000

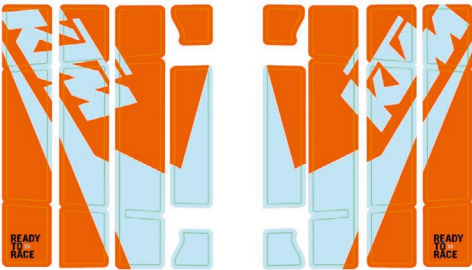


RADIATOR PROTECTION GRILLE STICKER KIT

SX/XC	19 - 21	XC-W	20 - 21
SX-F/XC-F	19 - 21	XCF-W/EXC-F	20 - 21

- Perfect fit
- Visual highlight

ART.-NR.  
791.08.999.000





## STICKER SHEET

- Made of robust material
- Pre-cut stickers

– Contains 5 sheets

ART.-NR.

796.08.978.000



## NUMBER PLATE BACKGROUNDS

SX/XC	19 - 21	XC-W	20 - 21
SX-F/XC-F	19 - 21	XCF-W/EXC-F	20 - 21

– Perfect fit

– 4 parts

ART.-NR.

■ 797.08.988.100 / C1  
■ 797.08.988.100 / 67

□ 797.08.988.100 / AB  
■ 797.08.988.100 / 80

■ 797.08.988.100 / 38



## NUMBERS

– 5" tall, 3 pieces each

ART.-NR.

■ 322.200 (0)  
■ 322.201 (1)  
■ 322.202 (2)  
■ 322.203 (3)  
■ 322.204 (4)

■ 322.205 (5)  
■ 322.206 (6)  
■ 322.207 (7)  
■ 322.208 (8)  
■ 322.209 (9)

□ 322.100 (0)  
□ 322.101 (1)  
□ 322.102 (2)  
□ 322.103 (3)  
□ 322.104 (4)

□ 322.105 (5)  
□ 322.106 (6)  
□ 322.107 (7)  
□ 322.108 (8)  
□ 322.109 (9)

1 2 3 4 5  
6 7 8 9 0



068  
069







## SEATS

# FACTORY SEAT

SX/XC	19 - 21	XC-W	20 - 21
SX-F/XC-F	19 - 21	XCF-W/EXC-F	20 - 21

ART.-NR.: 791.07.040.100



**KTM** FACTORY RACING

- Custom designed seat for an uncompromising look
- Resistant coating
- Seat cover with transversely stitched ribs
- Maximum grip with unrestricted freedom of movement
- Standard seat height





## STEP UP SEAT

<b>SX/XC</b>	19 - 21	<b>XC-W</b>	20 - 21
<b>SX-F/XC-F</b>	19 - 21	<b>XCF-W/EXC-F</b>	20 - 21

- Developed according to the requirements of our factory riders
- Resistant coating

- Special gradation for good grip even when accelerating hard
- Standard seat height

ART-NR.  
**791.07.940.400** (STEP-UP)



## WAVE SEAT

<b>SX/XC</b>	19 - 21	<b>XC-W</b>	20 - 21
<b>SX-F/XC-F</b>	19 - 21	<b>XCF-W/EXC-F</b>	20 - 21

- Elegant cover
- Resistant coating
- Plenty of freedom of movement and yet perfect hold

- The “Wave surface” has the effect of a gradation
- Standard seat height

ART-NR.  
**791.07.940.300** (WAVE)



## SEAT POCKET

Recommended for storing your timecard during races. Stick it directly to the seat with grip glue.

ART-NR.  
**794.07.978.000**





## HIGH SEAT

<b>SX/XC</b>	19 - 21	<b>XC-W</b>	20 - 21
<b>SX-F/XC-F</b>	19 - 21	<b>XCF-W/EXC-F</b>	20 - 21

– Resistant coating

– Specially designed for riders with a height of above 5'10"

ART.-NR.

**791.07.940.000** HIGH (+20 MM)

## EXTRA HIGH SEAT

<b>SX/XC</b>	19 - 21	<b>XC-W</b>	20 - 21
<b>SX-F/XC-F</b>	19 - 21	<b>XCF-W/EXC-F</b>	20 - 21

– Resistant coating

– Specially designed for riders with a height of above 6'2"

ART.-NR.

**791.07.940.100** EXTRA HIGH (+35 MM)

## LOW SEAT

<b>SX/XC</b>	19 - 21	<b>XC-W</b>	20 - 21
<b>SX-F/XC-F</b>	19 - 21	<b>XCF-W/EXC-F</b>	20 - 21

– Resistant coating

– Enables shorter drivers to also achieve the optimum seat height

ART.-NR.

**791.07.940.200** LOW (-15 MM)

## SOFT SEAT

<b>SX/XC</b>	19 - 21	<b>XC-W</b>	20 - 21
<b>SX-F/XC-F</b>	19 - 21	<b>XCF-W/EXC-F</b>	20 - 21

– Resistant coating

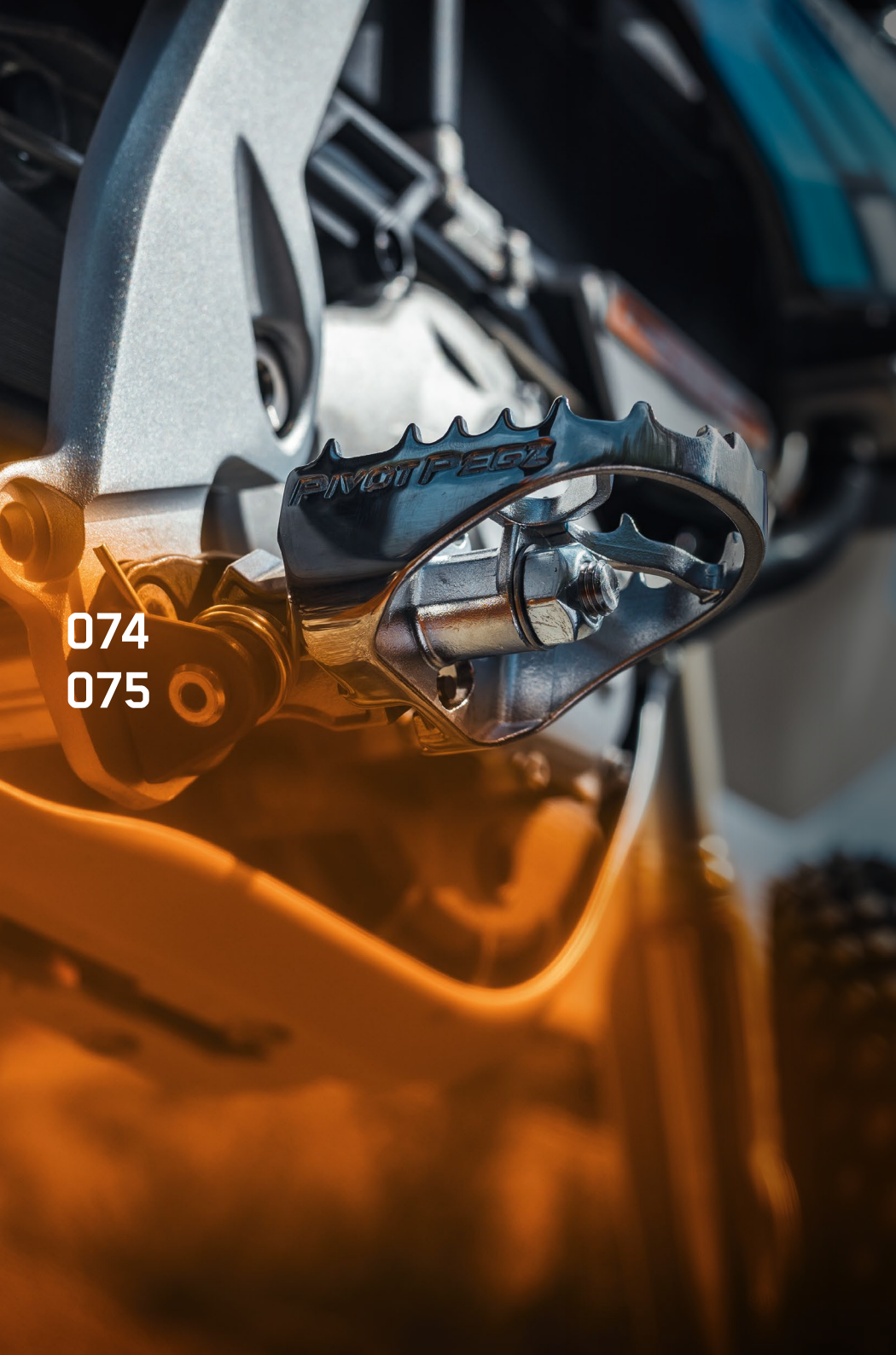
– Highly elastic foam for extra comfort

– Standard seat height

ART.-NR.

**791.07.940.500** (SOFT)









# FOOTPEGS







## PIVOT PEGZ

SX/XC	17 - 21	XC-W	17 - 21
SX-F/XC-F	17 - 21	XCF-W/EXC-F	17 - 21

- More curve pressure
- Permanent contact between boot and footpeg
- Extends the service life of your boots
- Enlarged tread area
- More control

ART.-NR.

797.03.940.044

- Easier shifting and braking
  - Move along with weight shift
- Foot pegs that move with you when you shift your weight.  
Ideal for MOTOCROSS, ENDURO and SUPERMOTO.



## FOAM

- For extremely muddy conditions

ART.-NR.

548.03.095.000



078  
079







# TANKS

FUEL TANK

CCC00

XC TPI	20 - 21	XC-W	20 - 21
SX-F/XC-F	19 - 21	XCF-W	20 - 21

- Ergonomically perfect shape (the result of years of racing experience)
- Without fuel tank cap
- Comes with adapters for mounting your stock spoilers

ART-NR.  
797.07.913.044 (11.5 L)



FUEL TANK

CCC00

125 / 150 SX	19 - 21
250 / 300 SX	19 - 21

- Ergonomically perfect shape (the result of years of racing experience)
- Without fuel tank cap
- Comes with adapters for mounting your stock spoilers
- For use on SX models, an ENDURO filler cap is required (781.07.908.144 or ENDURO stock filler cap)

ART-NR.  
555.07.913.044 (11.5 L)





## FUEL TANK

CCCU0

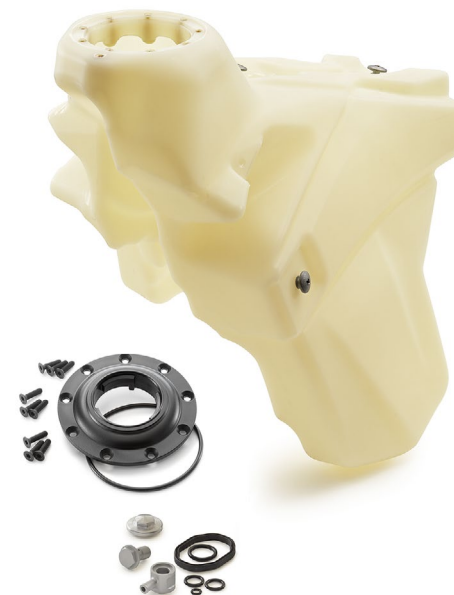
SX-F/XC-F 19-21  
XCF-W 20-21

- Ergonomically perfect shape (the result of years of racing experience)
- Longer reach due to bigger volume (SX-F models)
- IMS Dry-break system can be mounted
- Comes with adapters for mounting your stock spoilers
- For use without IMS System, the flange 797.07.913.055 is

- included in the kit to use the stock filler cap (ENDURO)
- For use on SX-F models, fuel pump 797.07.088.100 is required
- For use on SX-F models, an ENDURO filler cap is required (781.07.908.144 or ENDURO stock filler cap)

ART.-NR.

791.07.913.044 (10 L)



## FACTORY FUEL TANK

CCCU0

SX-F/XC-F 19-21

- Ergonomically perfect shape (the result of years of racing experience)

- Look identical to that of our Factory Racing Team
- Including CNC machined aluminum filler cap

ART.-NR.

793.07.913.044 (8 L)

**KTM** FACTORY RACING



FUEL FILTER

<b>XC-W</b>	13 - 21	<b>XCF-W/EXC-F</b>	13 - 21
-------------	---------	--------------------	---------

- Helps prevent dust and dirt from entering the tank when the fuel tank cap is opened
- Filter is attached directly to the tank opening
- Fits all 3/4 fuel tank caps

ART.-NR.  
781.07.990.100



FUEL CONNECTION

<b>250 / 300 XC-W TPI</b>	18 - 21	<b>XCF-W/EXC-F</b>	12 - 21
<b>SX-F/XC-F</b>	13 - 21		

- Clutch is secured by simply twisting the connection

ART.-NR.  
790.07.913.044



FUEL PUMP CONNECTION

<b>SX-F</b>	13 - 21	<b>XCF-W/EXC-F</b>	12 - 21
<b>150 / 250 / 300 XC-W TPI</b>	18 - 21		

- Developed according to the requirements of our factory riders
- Allows tighter fuel hose routing along the engine
- Prevents unintentional disconnection of the fuel hose in off-road applications

ART.-NR.  
777.07.988.017



VENT HOSE

- For tank and carburetor bleeding
- Gasoline resistant
- Can only be used for bleeding purposes
- Cannot be used as a connection between tank and carburetor!

ART.-NR.  
772.31.997.000 / 04 (3 M)















## SUSPENSION

# FACTORY TRIPLE CLAMP

FULLSIZE SX/XC 13 - 21 SX-F/XC-F 13 - 21

ART.-NR.: ■ 791.01.999.021/04 (1)

■ 791.01.999.021/C1A NEW (1)

XC-W 14 - 21 XCF-W/EXC-F 14 - 21

■ 797.01.999.021/04A NEW (2)



(1)



(2)

**KTM FACTORY RACING**

- CNC milled aluminum triple clamp
- Elegant anodized surface
- Visual highlight
- Optimally tuned steering stem stiffness
- 100% alignment of the fork tubes
- Ideal flexibility – precisely customized to the WP fork
- Specially optimized geometry of the fork clamping
- No ovalization of the fork outer tube
- Highly precise and smooth fork response

- Maximum handling gain
- Gain in stability at the front wheel
- Overall, more homogeneous force flows in the entire vehicle
- Simple offset adjustment
- Including steering stem with steering head bearing already pressed on
- Very simple offset adjustment of 20 or 22 mm
- Shorter offset: Stability on fast straights
- Longer offset: easier and quicker cornering in curves





FACTORY START

SX/XC	15 - 21	XC-W	16 - 21
SX-F/XC-F	15 - 21	XCF-W/EXC-F	16 - 21

- Provides more traction when starting
  - Mounted directly on the fork
  - Made of high-strength aluminum
- Elegant anodized surface
  - Pure race feeling

ART-NR.  
790.01.996.000



FACTORY START

SX/XC	15 - 21	XC-W	16 - 21
SX-F/XC-F	15 - 21	XCF-W/EXC-F	16 - 21

- Provides more traction when starting
  - Mounted directly on the fork
  - Made of high-strength aluminum
  - Elegant anodized surface
  - Pure race feeling
- Two different selectable preloads, without additional effort in mounting
  - Simple mounting of the fork ring due to two part design
  - No longer necessary to remove the fork

ART-NR.  
791.01.996.000



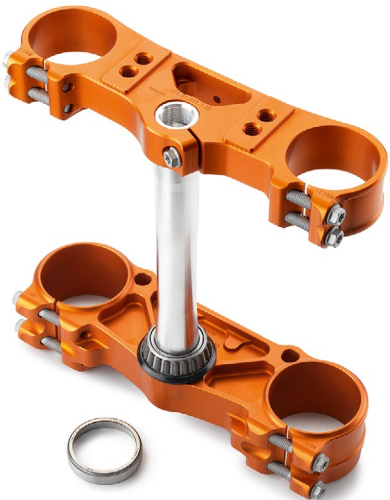
TRIPLE CLAMP

SX/XC	13 - 21	XC-W	14 - 21
SX-F/XC-F	13 - 21	XCF-W/EXC-F	14 - 21

- CNC milled aluminum triple clamp
  - Elegant anodized surface
  - Visual highlight
  - Optimally tuned steering stem stiffness
  - 100 % alignment of the fork tubes
  - Ideal flexibility – precisely customized to the WP fork
- Including steering stem with steering head bearing already pressed on

Required items for installation on SX models from model year 2016:  
Handlebar mount kit 789.01.939.044/144/244/344/444  
or PHDS SXS.07.125.200

ART-NR.  
781.01.999.020 / 04 (20 MM OFFSET)      781.01.999.022 / 04 (22 MM OFFSET)





## LOWERING KIT

XC-W

17 - 21

XCF-W/EXC-F 17 - 21

- Perfect compromise between maximum chassis performance and lowest possible vehicle height
- No restrictions on riding dynamics
- Enables shorter drivers to also achieve the optimum seat height
- Made of the highest quality materials
- Tested in the toughest conditions
- Developed together with the vehicle

ART.-NR.

**796.12.955.144** (-20 MM)

## LOWERING KIT

XC-W

17 - 21

XCF-W/EXC-F 17 - 21

- Perfect compromise between maximum chassis performance and lowest possible vehicle height
- No restrictions on riding dynamics
- Enables shorter drivers to also achieve the optimum seat height
- Made of the highest quality materials
- Tested in the toughest conditions
- Developed together with the vehicle

ART.-NR.

**796.12.955.544** (-50 MM)





PRELOAD ADJUSTER

- Fast preload adjustment

– Use of the entire length of the thread on the shock absorber

– Very easy operation
- Extremely low weight

– Dirt-resistance

– Mechanical drive

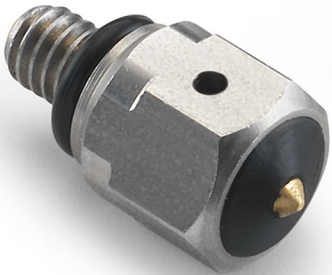
125 /150 <b>SX/XC</b>	16 - 21	<b>XC-W</b>	17 - 21
250 / 300 <b>SX/XC</b>	17 - 21	<b>XCF-W/EXC-F</b>	17 - 21
<b>SX-F/XC-F</b>	16 - 21		
ART.-NR. <b>790.04.905.000</b> <sup>(1)</sup>		ART.-NR. <b>796.04.905.000</b> <sup>(2)</sup>	

PRELOAD ADJUSTER SET

<b>XC-W</b>	20 - 21	<b>XCF-W/EXC-F</b>	20 - 21
– Toolless adjustment of the spring preload			
ART.-NR. <b>797.01.905.000</b>			

BLEEDER VALVE

<b>SX/XC</b>	16 - 21	<b>XC-W</b>	20 - 21
<b>SX-F/XC-F</b>	16 - 21	<b>XCF-W/EXC-F</b>	20 - 21
— Specially developed for WP forks		— Developed together with the vehicle	
— Fork bleeding using finger pressure			
ART.-NR. <b>791.01.900.000</b>			



# // CONQUER THE TOUGHEST TERRAIN!

## WP SUSPENSION

PERFORMANCE is more than a word to us – it is central to all we do. To allow you to perform at your highest level, WP Suspension is dedicated to developing performance-focused suspensions and equipment that deliver reliability and consistency to motorcyclists. So, whether you're a professional racer or an avid leisure motorcyclist, you benefit from the same single-minded approach, that allows the world's most fastest to get in front. WP Suspensions relentless pursuit of winning performance fuels our continued INNOVATION and product progression. With a network consisting 139 AUTHORIZED CENTERS in 28 countries, we strive to provide the best service and guidance across the board to support our community.

## WP XPLOR/XACT PRO 7548 FORK



The XPLOR/XACT PRO 7548 FORK offers ambitious riders peak performance and compromise-free off-road dynamics thanks to WP CONE VALVE technology. The cone-shaped valve requires no shim stacks and prevents abrupt hardening or loss of damping due to bent shims. The XPLOR/XACT PRO 7548 FORK combines comfort with improved breakthrough reserves and enables an exceptionally direct response on any terrain. It is no coincidence that WP PRO COMPONENTS have been an integral part of the leading class in motorsports for years.

- Progressive damping behavior thanks to WP Cone Valve Technology
- High damping reserves for strong impacts and jumps (no abrupt hardening)
- Comfortable handling of the motorcycle in all situations
- No damping loss thanks to cone valve technology
- Can be tailored to your needs by WP AUTHORIZED CENTERS



## WP XPLOR PRO 6500 CARTRIDGE



There is no section of the course too hard for the WP XPLOR PRO 6500 cartridge and with motorsport know-how it will take you all the way to the top. The built-in WP CLOSED CARTRIDGE TECHNOLOGY guarantees consistent damping performance and prevents loss of damping on repeated shots. Thanks to the numerous externally adjustable settings, you are always perfectly adapted to all off-road requirements, even when conditions change at the last minute.

- Improved response in every situation
- Reduced cavitation risk – no damping loss
- Extreme longevity due to high-quality materials
- All settings can be adjusted externally and flexibly
- Spring preload fully variable









# WP XPLOR PRO 8946 SHOCK



The XPLOR PRO 8946 SHOCK is unaffected by all the obstacles the terrain throws at it. Due to the highly innovative SUPERTRAX TECHNOLOGY, the rebound speed can be optimized via adjusters after a lift off of the rear wheel and the time without ground contact can be drastically reduced. This means that offroad riders with the XPLOR PRO 8946 Shock are back on the throttle faster and dig their rear wheel into the dirt. Reduced motorcycle compression and a more upright riding position reduces the physical stress on the rider and ensures a crucial advantage in competition.

- Increased control and a more comfortable driving experience
- Individual adjustability of the rebound movement
- More grip and traction of the rear wheel and therefore improved acceleration
- SUPERTRAX is used by factory team riders in Enduro, MX and Rally
- Includes integrated WP preload adjuster for easy shock spring adjustment



# WP XACT PRO 8950 SHOCK



Thanks to the damping with WP SUPERTRAX technology, your rear wheel is back in the dirt faster and you overcome any obstacle with more power, traction and control over your bike. And if the terrain suddenly demands a little more sensitivity, the rebound damping can be perfectly adjusted to suit any rider via the built-in TXN adjuster. To round off this offroad Performance Package, the XACT PRO 8950 shock's LINKED DAMPING SYSTEM provides the necessary breakthrough reserves through a significantly optimized progression of the shock absorber.

- Significantly more grip, traction and acceleration
- Reduced "packing down"
- More comfort in demanding situations
- Adjustable rebound damping
- Adjustable high- and low-speed compression damping
- Spring preload infinitely variable
- Includes integrated WP preload adjuster for easy shock spring adjustment















# WHEELS

OFFROAD  
SUPERMOTO  
SPECIAL PARTS

## FACTORY FRONT WHEEL

## FACTORY REAR WHEEL



ART.-NR.: **790.09.901.144 / 04** 1.6 X 21"  
**790.09.901.144 / 30** 1.6 X 21"

HUB/NIPPLE COLOR

HUB/NIPPLE COLOR

**790.10.901.144 / 04** 2.15 X 19"  
**790.10.901.144 / 30** 2.15 X 19"  
**790.10.902.144 / 04** 2.15 X 18"  
**790.10.902.144 / 30** 2.15 X 18"

CCCU0

- Anodized hub milled from a whole piece
- Maximum weight saving compared to standard wheels
- Maximum gain in handling and, at the same time, stability in challenging off-road situations

- Anodized aluminum spoke nipples







## FRONT WHEEL 3.5 X 16.5"

CCCU0

- 3.5 x 16.5"
- Comes with bushings for 26 mm axle diameter

- Can be adapted to other axle diameter by using the bike's stock bushings

ART-NR.

261.09.001.044 / 30



## REAR WHEEL 5 X 17"

CCCU0

- 5 x 17"
- Comes with bushings for 20 mm axle diameter

- Can be adapted to other axle diameter by using the bike's stock bushings

ART-NR.

261.10.001.044 / 30



## SENSOR MAGNET RETAINING BRACKET

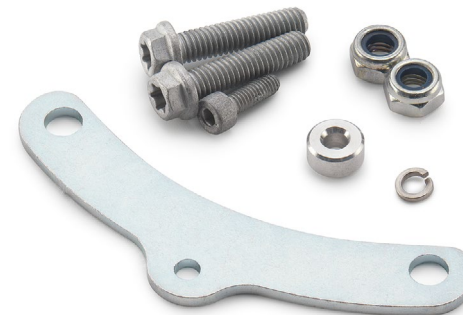
XC-W

10 - 21

- To ensure the sensor magnet is in the correct location even after a change from Enduro to Supermoto wheels

ART-NR.

790.14.950.044









WHEEL BEARING PROTECTION CAP SET

XC-W 16 - 21 XCF-W/EXC-F 16 - 21

- Optimal protection against penetration of mud, sand and water into the wheel bearing of your wheel
- Reduces wear on sealing rings and wheel bearings for longer service life

ART.-NR.  
796.09.915.000 / EB (1) 796.10.915.000 / EB (2)



(1)



(2)

FACTORY WHEEL BEARING PROTECTION CAP SET

XC-W 16 - 21 XCF-W/EXC-F 16 - 21

- Optimal protection against penetration of mud, sand and water into the wheel bearing of your wheel
- Reduces wear on sealing rings and wheel bearings for longer service life
- Incl. special low friction shaft sealing rings

FRONT WHEEL CAP SET

ART.-NR.  
796.09.917.000 / EB (1)

REAR WHEEL CAP SET

ART.-NR.  
796.10.917.000 / EB (2)



(1)



(2)

FACTORY WHEEL REPAIR KIT

XC-W 16 - 21 XCF-W/EXC-F 16 - 21

- Optimal protection against penetration of mud, sand and water into the wheel bearing of your wheel
- Reduces wear on sealing rings and wheel bearings for longer service life
- Wheel bearing repair kit with wheel bearing protection cap set and low friction shaft sealing rings

FACTORY FRONT WHEEL REPAIR KIT

ART.-NR.  
796.09.919.000 / EB (1)

FACTORY REAR WHEEL REPAIR KIT

ART.-NR.  
796.10.919.000 / EB (2)



(1)



(2)



## WHEEL RIM STICKER KIT

- Pre-cut stickers
- Suitable for front and rear wheel rim

– For wheel size 18/21"; 19/21"

ART.-NR.  
780.09.099.000



## WHEEL RIM STICKER KIT

- Pre-cut stickers
- Suitable for front and rear wheel rim

– For wheel size 18/21"; 19/21"

ART.-NR.  
781.09.999.000



## WHEEL RIM STICKER KIT

- Pre-cut stickers
- Suitable for front and rear wheel rim

– For wheel size 18/21"; 19/21"

ART.-NR.  
791.09.999.000



## AXLE REDUCTION KIT

– Together with wheel spindle 503.09.081.200 and nut 503.09.082.100, this kit allows forks with

a diameter of 26 mm to be fitted to wheels with an axle diameter of 20 mm

ART-NR.  
SXS.03.540.400



## HUB STICKER KIT

- 4 pieces 37 x 31 mm

- 4 pieces 48 x 40 mm

ART-NR.  
U6.951.087



## HUB STICKER KIT

- 4 pieces 37 x 31 mm

- 4 pieces 48 x 40 mm

ART-NR.  
791.09.998.000





## FRONT AXLE PULLER

SX/XC	15 - 21	XC-W	17 - 21
SX-F/XC-F	15 - 21	XCF-W/EXC-F	17 - 21

– Makes removal of the front wheel easier

– For all front axles with a diameter of 22 mm

ART.-NR.

790.09.981.060 / 04



## VALVE CAP SET

– Anodized valve caps

– With valve opener function

ART.-NR.

777.10.976.050 / 04



## VALVE CAP SET

– Anodized valve caps

ART.-NR.

777.10.976.150 / 04



106  
107







# CHAINS SPROCKETS

SPROCKETS  
CHAINS  
SPECIAL PARTS

# SUPERSPROX STEALTH REAR SPROCKET

ART.-NR.: 584.10.051.038 / 04 (T38)

584.10.051.040 / 04 (T40)

584.10.051.041 / 04 (T41)

584.10.051.042 / 04 (T42)

584.10.051.044 / 04 (T44)

584.10.051.045 / 04 (T45)

584.10.051.046 / 04 (T46)

584.10.051.048 / 04 (T48)

584.10.051.049 / 04 (T49)

584.10.051.050 / 04 (T50)

584.10.051.051 / 04 (T51)

584.10.051.052 / 04 (T52)



**KTM** FACTORY RACING

- Teeth made of high-strength steel, for an extra long service life
- Aluminum center section, reduces unsprung masses
- Permanently joined together with high-strength rivets

- At least three times longer service life than other aluminum rear sprockets
- 50% lighter than steel rear sprockets
- Longer service life of the entire drivetrain kit







REAR SPROCKET

- Teeth made of high-strength steel, for an extra long service life
  - Extremely low-wear
- Significantly longer durability
  - Recommended for long journeys

ART-NR.			
582.10.951.042 (T42)	582.10.951.045 (T45)	582.10.951.048 (T48)	
582.10.951.050 (T50)	582.10.951.052 (T52)		



REAR SPROCKET

- Made of high-strength aluminum
  - Elegant anodized surface
  - Visual highlight
  - Extremely light
  - Reduces the rotating masses
- Precisely ground to 0.002 mm, dead straight and impact-free chain track
  - Free from vibration – therefore the highest power transmission efficiency

ART-NR.			
777.10.951.045 / 04 (T45)	777.10.951.047 / 04 (T47)	777.10.951.048 / 04 (T48)	
777.10.951.049 / 04 (T49)	777.10.951.050 / 04 (T50)	777.10.951.052 / 04 (T52)	



RENTHAL REAR SPROCKET

- Made exclusively for KTM by Renthal, these orange anodized rear sprockets are used by the KTM Factory Race teams
- Lightweight, durable and provide great performance

ART-NR.			
U695.1068 (T44)	U695.1069 (T48)	U690.6815 (T49)	
U695.1070 (T50)	U690.6816 (T51)	U695.1071 (T52)	



CHAIN

- Specially developed for use in motocross
  - No O- or Z-rings & minimum loss of power and good durability
- Visual highlight

ART-NR.	
■ 789.10.065.118 (S20)	





## CHAIN

- Specially developed for use in motocross
- No O- or Z-rings & minimum loss of power and good durability

ART.-NR.

■ 503.10.165.118 (520)



## X-RING CHAIN

- Greater flexibility and better running characteristics
- Constant and permanent lubrication
- Better sealing against water and dirt
- Significantly longer durability

ART.-NR.

■ 780.10.167.118 (520)



## CHAIN

- Specially developed for use in motocross
- No O- or Z-rings & minimum loss of power and good durability
- Visual highlight

ART.-NR.

■ 790.10.965.118 / EB (520)



## XW-RING CHAIN

- Greater flexibility and better running characteristics
- Constant and permanent lubrication
- Better sealing against water and dirt
- Significantly longer durability

ART.-NR.

■ 796.10.965.118 / EB (520)



CHAIN GUIDE

**KTM** FACTORY RACING

SX/XC	07 - 21	XC-W	08 - 21
SX-F/XC-F	07 - 21	XCF-W/EXC-F	08 - 21

- Race look
- Visual highlight
- Look identical to that of our Factory Racing Team
- With exchangeable chain track surface,

- therefore extremely durable
- Specially designed for the challenges of off-road use
- CNC machined out of teflon

ART.-NR.  
781.04.970.000 / 04



CHAIN GUIDE

SX/XC	07 - 21	XC-W	08 - 21
SX-F/XC-F	07 - 21	XCF-W/EXC-F	08 - 21

- Race look
- Visual highlight

ART.-NR.  
781.04.070.100 / 04



CHAIN SLIDING PROTECTION

- In orange factory look

SX/XC	12 - 21	XC-W	12 - 21
SX-F/XC-F	12 - 21	XCF-W/EXC-F	12 - 21

ART.-NR.  
772.04.066.100 / 04

ART.-NR.  
515.04.066.000 / 04



CHAIN SLIDER

125 / 150 SX / XC	16 - 21	SX-F / XC-F	16 - 21	XCF-W/EXC-F	17 - 21
250 / 300 SX / XC	17 - 21	XC-W	17 - 21		

- In orange factory look

ART.-NR.  
790.03.053.000 / 04











114  
115







# BRAKES

BRAKE CALIPERS  
BRAKE DISCS  
BRAKE PADS  
SERVICE  
SPECIAL PARTS

FACTORY BRAKE CALIPER



SX/XC	04 - 21	XC-W	04 - 21
SX-F/XC-F	04 - 21	XCF-W/EXC-F	04 - 21

- Clear pressure point across the entire temperature range
- More brake power
- Higher stiffness with the same weight
- Made of high-strength aluminum

When fitting to SX models as of MY13, the CNC brake calliper support 777.13.975.044 must be used instead of the supplied brake calliper support due to the larger axle diameter.

ART.-NR.  
 SXS.07.125.712



FACTORY BRAKE CALIPER



SX/XC	09 - 21	XC-W	09 - 21
SX-F/XC-F	09 - 21	XCF-W/EXC-F	09 - 21

- Clear pressure point across the entire temperature range
- More brake power

- Higher stiffness with the same weight
- Made of high-strength aluminum

ART.-NR.  
 SXS.09.125.512



FLAME BRAKE DISC (FRONT)



SX/XC	09 - 21	XC-W	10 - 21
SX-F/XC-F	09 - 21	XCF-W/EXC-F	10 - 21

- Floating
- Outer ring made of stainless high-performance brake steel
- Inner ring anodized
- Minimal wear on brake pads

- With Flame design for added braking performance
- The brake caliper support 789.13.914.100 is required for mounting

ART.-NR.  
 789.09.960.000 (270 MM)





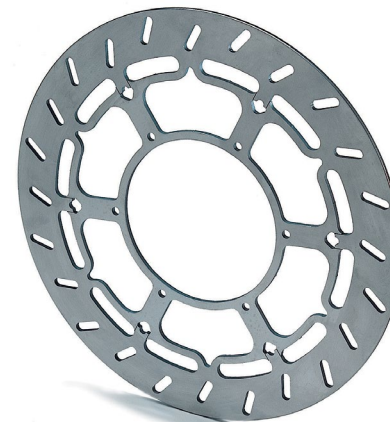
## BRAKE DISC (FRONT)

SX/XC	- 21	XC-W	- 21
SX-F/XC-F	- 21	XCF-W/EXC-F	- 21

- Larger diameter for added braking performance
- Outer ring made of stainless high-performance brake steel

Can only be used in conjunction with standard installed brake caliper, and the brake caliper support 584.13.014.000 or 770.13.914.000 is therefore required for this.

ART.-NR.  
**583.09.060.000** (320 MM)



## FLAME BRAKE DISC (REAR)

**KTM FACTORY RACING**

SX/XC	07 - 21	XC-W	08 - 21
SX-F/XC-F	07 - 21	XCF-W/EXC-F	08 - 21

- Outer ring made of stainless high-performance brake steel
- No fading
- Minimal wear on brake pads

- Significantly longer lasting
- With Flame design for added braking performance
- Extra thick: 4.6 mm

ART.-NR.  
**789.10.960.000** (220 MM)



## WAVE BRAKE DISC (REAR)

SX/XC	- 21	XC-W	- 21
SX-F/XC-F	- 21	XCF-W/EXC-F	- 21

- Full version for muddy track conditions
- Minimal wear on brake pads

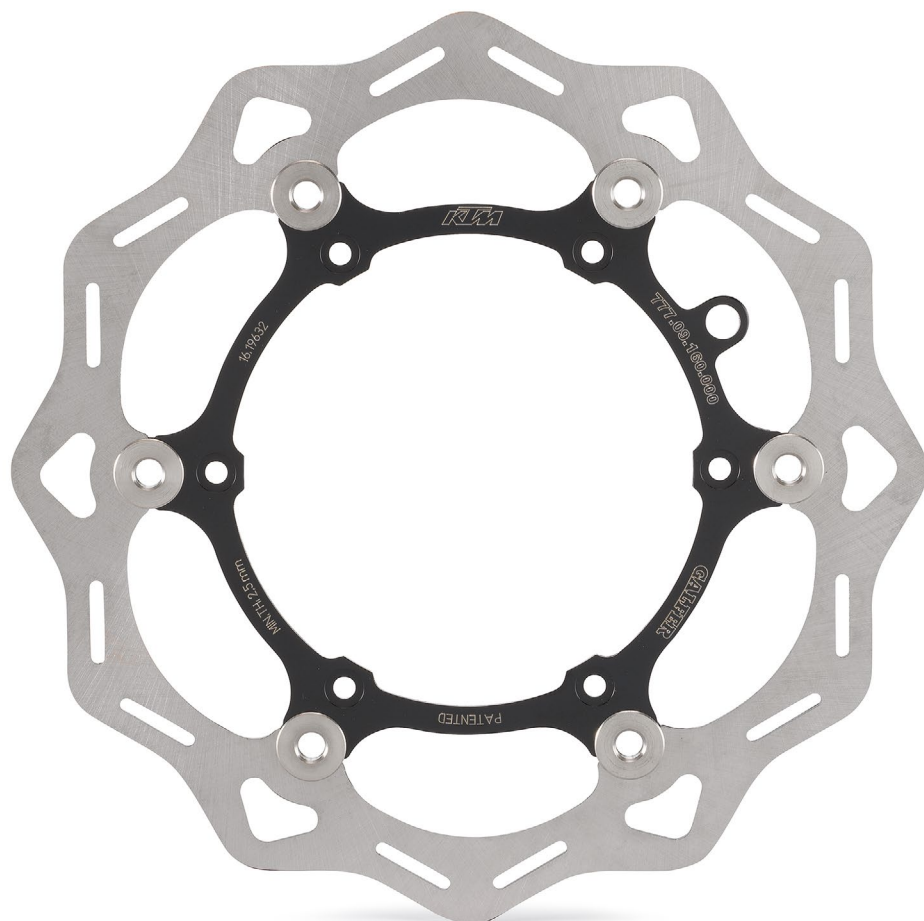
- Significantly longer lasting

ART.-NR.  
**250.10.960.000** (220 MM)



# WAVE BRAKE DISC (FRONT)

SX/XC - 21 XC-W - 21  
SX-F/XC-F - 21 XCF-W/EXC-F - 21  
**ART.-NR.: 777.09.160.000** 260 MM



- 
- Floating
  - Outer ring made of stainless high-performance brake steel
  - Inner ring anodized
  - Minimal wear on brake pads







BRAKE PADS

- Significantly longer lasting  
 – Very high friction coefficient for maximum and permanent braking force
- Very good braking effect even in wet conditions  
 – For extreme operating conditions (sand, gravel...)  
 – Eliminates “fading” almost completely

SX/XC 04 - 21  
 SX-F/XC-F 04 - 21  
 XC-W 04 - 21  
 XCF-W/EXC-F 04 - 21  
 REAR  
 ART.-NR.  
 548.13.990.200 <sup>(1)</sup>

SX/XC - 21  
 SX-F/XC-F - 21  
 XC-W - 21  
 XCF-W/EXC-F - 21  
 FRONT  
 ART.-NR.  
 590.13.930.200 <sup>(2)</sup>



(1)



(2)

BRAKE PADS

- Softer due to high content of organic substances  
 – Thermal insulation by means of ceramic underlayer  
 – Less aggressive brake feel
- Lower friction coefficient than sintered brake pads  
 – Special material mixture

SX/XC 04 - 21  
 SX-F/XC-F 04 - 21  
 XC-W 04 - 21  
 XCF-W/EXC-F 04 - 21  
 REAR  
 ART.-NR.  
 548.13.990.100 <sup>(1)</sup>

SX/XC - 21  
 SX-F/XC-F - 21  
 XC-W - 21  
 XCF-W/EXC-F - 21  
 FRONT  
 ART.-NR.  
 590.13.930.100 <sup>(2)</sup>



(1)



(2)



## BRAKE BLEEDER SCREW

SX/XC	09 - 21	XC-W	11 - 21
SX-F/XC-F	09 - 21	XCF-W/EXC-F	11 - 21

- With return valve
- Anodized dust protection cap

– Quick and easy bleeding of the brake

ART.-NR.  
**780.13.920.000** (FRONT)



## BANJO BOLT WITH BLEEDER FUNCTION

SX/XC	- 21	XC-W	- 21
SX-F/XC-F	- 21	XCF-W/EXC-F	- 21

- With return valve
- Anodized dust protection cap

– Quick and easy bleeding of the brake

ART.-NR.  
**770.13.920.100** (REAR)



## BRAKE PAD RETAINING PIN

SX/XC	04 - 21	XC-W	04 - 21
SX-F/XC-F	04 - 21	XCF-W/EXC-F	04 - 21

- Replaces the standard pins
- Quick and easy brake pad change even in difficult conditions

ART.-NR.  
**503.13.082.200**



REAR BRAKE SAFETY WIRE

SX/XC	XC-W
SX-F/XC-F	XCF-W/EXC-F

- Helps protect the brake pedal from bending by branches

ART-NR.  
 548.12.063.044



BRAKE CALIPER SUPPORT

SX/XC	09 - 21	XC-W	10 - 21
SX-F/XC-F	09 - 21	XCF-W/EXC-F	10 - 21

- Made of high-strength aluminum
- Improved braking performance
- Required for using the 320 mm brake disc

ART-NR.  
 770.13.914.000



BRAKE CALIPER SUPPORT

SX/XC	13 - 21	SX-F/XC-F	13 - 21
-------	---------	-----------	---------

- High stiffness and strength
- CNC milled from high-strength aluminum
- Lighter than series components
- Improved braking performance

ART-NR.  
 777.13.975.044



BRAKE CALIPER SUPPORT

SX/XC	09 - 21	XC-W	09 - 21
SX-F/XC-F	09 - 21	XCF-W/EXC-F	09 - 21

- Made of high-strength aluminum
- Improved braking performance
- Required for using a 270 mm brake disc and 2-piston BREMBO® brake caliper.

ART-NR.  
 789.13.914.100











124  
125







# COOLING

RADIATOR  
FANS  
PROTECTION



FACTORY RADIATOR KIT



- Special factory radiators
- More efficient cooling due to larger surface area
- Incl. special radiator hoses and radiator protections

250/350 **SX-F/XC-F** 19 - 21

ART.-NR.  
**791.35.910.044**

450 **SX-F/XC-F** 19 - 21

ART.-NR.  
**795.35.910.044**



RESERVOIR

**XC-W** 17 - 21 **XCF-W/EXC-F** 17 - 21

- Coolant resevoir for overheated radiators
- To be installed in the frame breast pipe

ART.-NR.  
**796.35.965.044**





## RADIATOR FAN

SX/XC	19 - 21	XC-W	20 - 21
SX-F/XC-F	19 - 21	XCF-W/EXC-F	20 - 21

- Provides more air
- Maximum performance
- Digital control
- Current temperature can be read at any time

ART.-NR.

557.35.941.044

- Variable switch-on temperature between 65 °C and 95 °C
- Switch-off temperature 1 °C below the selected switch-on temperature
- Provides better cooling of the engine



## RADIATOR FAN

**KTM** FACTORY RACING

XC-W	20 - 21	XCF-W/EXC-F	20 - 21
------	---------	-------------	---------

- Better cooling
- Maximum performance

ART.-NR.

797.35.941.044

- Provides more air
- Plug & Play mounting



RADIATOR PROTECTION

SX/XC	19 - 21	XC-W	20 - 21
SX-F/XC-F	19 - 21	XC-F-W/EXC-F	20 - 21

- Suitable for the left and right side
- Provides maximum protection at the lowest possible weight
- Optimal protection against roost impact
- Visual highlight
- Easy to mount

ART.-NR.  
■ 791.35.034.000 / EB      □ 791.35.034.000 / 28



RADIATOR PROTECTION

125/150 SX	16 - 21	SX-F/XC-F	16-21	XCF-W/EXC-F	17-21
250 SX/XC	17 - 21	XC-W	17 - 21		

- Provides maximum protection at the lowest possible weight
- Optimal protection against roost impact
- Including adapted radiator protection grills
- Easy to mount

ART.-NR.  
796.35.936.044



RADIATOR PROTECTION SLEEVE

125/150 SX	16 - 21	SX-F/XC-F	16-21	XCF-W/EXC-F	17-21
250 SX/XC	17 - 21	XC-W	17 - 21		

- Helps protect the radiator from mud, dirt and sand
- Protection against rapid overheating of the engine in muddy conditions
- For extremely muddy conditions

ART.-NR.  
794.35.935.000





## FOAM

- Helps protect the radiator from mud, dirt and sand
- Protection against rapid overheating of the engine in muddy conditions
- For extremely muddy conditions

ART.-NR.

548.35.980.000



## RADIATOR HOSE PROTECTION

XC-W

20 - 21

XCF-W/EXC-F 20 - 21

ART.-NR.

797.35.990.000



## WATER PUMP COVER PROTECTION

250 / 350 **SX-F / XC-F** 16 - 21  
250 / 350 **XCF-W/EXC-F** 17 - 21

- Helps protect the water pump cover
- Helps protect the radiator hoses at the hose connection
- Visual highlight

ART.-NR.

■ 790.35.994.000 / EB

■ 790.35.994.000 / C1





130  
131







# PROTECTION

ENGINE PROTECTION 2-STROKE  
ENGINE PROTECTION 4-STROKE  
CHASSIS

SKID PLATE

- Endurance-tested for the toughest off-road applications
  - Easy to mount
  - Extremely durable
  - Made of high-strength aluminum
  - Highest quality workmanship
- Most effective protection for frame and engine
  - Decoupled from the frame by rubber pads
  - Extremely resistant fastening system
  - Custom design – specifically developed for KTM models
  - Thickness 4 mm

125 / 150 **SX** 16 – 21  
150 **XC-W** 17 – 21

ART.-NR.  
**504.03.990.000** (ALU FLAT)

250 / 300 **SX / XC** 19 – 21  
250 / 300 **XC-W** 20 – 21

ART.-NR.  
**555.03.990.000** (ALU FLAT)



SKID PLATE

- Endurance-tested for the toughest off-road applications
  - Easy to mount
  - Extremely durable
  - Made of high-strength aluminum
  - Highest quality workmanship
  - Most effective protection for frame and engine
- Decoupled from the frame by rubber pads
  - Extremely resistant fastening system
  - Custom design – specifically developed for KTM models
  - Side parts welded from inside and out

125 **SX** 16 – 21  
150 **XC-W** 17 – 21

ART.-NR.  
**504.03.990.544** (ALU WELDED)

250 **SX / XC** 19 – 21  
300 **XC** 19 – 21  
250 / 300 **XC-W** 20 – 21

ART.-NR.  
**555.03.990.544** (ALU WELDED)



FOAM

- Reduces dirt deposits between engine and skid plate
- Provides better cooling of the engine

ART.-NR.  
**590.03.990.250**





## SKID PLATE

- Easy to mount
- Developed for use on the toughest off-road terrain
- Maximum protection at the lowest possible weight
- Manufactured using state-of-the-art 2-component injection molding technology
- Made from special, high-strength plastic
- Decoupled from the frame by rubber pads
- Mounting directly on the frame
- Custom design – specifically developed for KTM models

150 **XC-W** 17 – 21

ART-NR.  
**504.03.090.144** (PLASTIC)

250 / 300 **XC-W** 17 – 21

ART-NR.  
**554.03.090.144** (PLASTIC)



## CLUTCH SLAVE CYLINDER PROTECTION

- CNC milled from high-strength aluminum
- Best possible effective protection for the clutch slave cylinder
- Helps prevent damage to the engine housing in the event of chain cracks
- No stones drawn in between chain and engine housing (gentle on the material)
- Protects from damage in the event of a fall

125 / 150 **SX** 16 – 21  
150 **XC-W** 17 – 21

ART-NR.  
**504.32.975.044**

250 **SX / XC** 17 – 21  
300 **XC** 19 – 21  
250 / 300 **XC-W** 17 – 21

ART-NR.  
**554.32.975.044**



## EXHAUST FLANGE GUARD

250 **SX / XC** 17 – 21  
250 / 300 **XC-W** 17 – 21

- CNC milled from high-strength aluminum
- Additionally hard anodized against corrosion

ART-NR.  
**554.37.994.044**

- Helps protect the exhaust flange from damage and breakage



# SKID PLATE

250 / 350 SX-F / XC-F

19 - 21

**ART.-NR.: 791.03.990.044** CARBON-SMC

450 SX-F / XC-F

19 - 21

**795.03.990.044** CARBON-SMC



- Endurance-tested for the toughest off-road applications
- Easy to mount
- Made from high-strength and robust C-SMC material (Carbon Sheet Molding Compound)
- Extremely light
- Extremely durable

- Highest quality workmanship
- Most effective protection for frame and engine
- Decoupled from the frame by rubber pads
- Mounting directly on the frame
- Custom design – specifically developed for KTM models
- Thickness: 3 mm





SKID PLATE

- Endurance-tested for the toughest off-road applications
- Easy to mount
- Extremely durable
- Made of high-strength aluminum
- Highest quality workmanship
- Most effective protection for frame and engine
- Decoupled from the frame by rubber pads
- Extremely resistant fastening system
- Custom design – specifically developed for KTM models
- Thickness 4 mm

250 / 350 **SX-F / XC-F** 16 - 18  
250 / 350 **XCF-W / EXC-F** 17 - 21

ART.-NR.  
**790.03.990.000** (ALU FLAT)

450 **SX-F / XC-F** 16 - 18  
450 / 500 **XCF-W / EXC-F** 17 - 21

ART.-NR.  
**794.03.990.000** (ALU FLAT)



SKID PLATE

- Endurance-tested for the toughest off-road applications
- Easy to mount
- Extremely durable
- Made of high-strength aluminum
- Highest quality workmanship
- Most effective protection for frame and engine
- Decoupled from the frame by rubber pads
- Extremely resistant fastening system
- Custom design – specifically developed for KTM models
- Side parts welded from inside and out
- Thickness 4 mm

250 / 350 **SX-F / XC-F** 16 - 18  
250 / 350 **XCF-W / EXC-F** 17 - 21

ART.-NR.  
**790.03.990.544** (ALU WELDED)

450 **SX-F / XC-F** 16 - 18  
450 / 500 **XCF-W / EXC-F** 17 - 21

ART.-NR.  
**794.03.990.544** (ALU WELDED)





## SKID PLATE

- Endurance-tested for the toughest off-road applications
- Easy to mount
- Made from high-strength and robust C-SMC material (Carbon Sheet Molding Compound)
- Extremely light
- Extremely durable
- Highest quality workmanship
- Most effective protection for frame and engine
- Decoupled from the frame by rubber pads
- Mounting directly on the frame
- Custom design – specifically developed for KTM models
- Thickness: 3 mm

250 / 350 **XCF-W / EXC-F** 17 – 21

ART-NR.  
**791.03.990.544** (CARBON-SMC)

450 / 500 **XCF-W / EXC-F** 17 – 21

ART-NR.  
**795.03.990.544** (CARBON-SMC)



## SKID PLATE

- Easy to mount
- Developed for use on the toughest off-road terrain
- Maximum protection at the lowest possible weight
- Custom design – specifically developed for KTM models
- Manufactured using state-of-the-art 2-component injection molding technology
- Made from special, high-strength plastic
- Decoupled from the frame by rubber pads
- Mounting directly on the frame

250 / 350 **XCF-W / EXC-F** 17 – 21

ART-NR.  
**792.03.090.044** (PLASTIC)

450 / 500 **XCF-W / EXC-F** 17 – 21

ART-NR.  
**796.03.090.044** (PLASTIC)



## CLUTCH SLAVE CYLINDER PROTECTION

- CNC milled from high-strength aluminum
- Best possible effective protection for the clutch slave cylinder
- Helps prevent damage to the engine housing in the event of chain cracks
- No stones drawn in between chain and engine housing (gentle on the material)
- Helps protect from damage in the event of a fall

250 / 350 **SX-F / XC-F** 16 - 21  
250 / 350 **XCF-W / EXC-F** 17 - 21

ART.-NR.  
**790.32.975.044**

450 **SX-F / XC-F** 16 - 21  
450 / 500 **XCF-W / EXC-F** 17 - 21

ART.-NR.  
**794.32.975.044**



## FOAM

- Reduces dirt deposits between engine and skid plate
- Provides better cooling of the engine

ART.-NR.  
**590.03.990.250**



## STATOR CABLE PROTECTION

250 / 350 **XCF-W / EXC-F** 20 - 21

- Provides maximum protection at the lowest possible weight
- Easy to mount
- Made of high-quality carbon
- Maximum protection against falls, roost, branches, etc.
- Mounting material included in scope of supply

ART.-NR.  
**791.39.940.000**





## CLUTCH COVER PROTECTION

- Optimal protection against stone impact
- Made of robust plastic
- Helps protect against the cover being pressed in by the brake lever in the event of a fall

– For the original outer clutch cover

250 / 350 **SX-F / XC-F** 16 – 21  
250 / 350 **XC-F-W / EXC-F** 17 – 21

ART.-NR.  
**792.30.994.000 / EB**



## CLUTCH COVER PROTECTION

- Optimal protection against stone impact
- Made of robust plastic
- Helps protect against the cover being pressed in by the brake lever in the event of a fall

– For the original outer clutch cover

450 **SX-F / XC-F** 16 – 21

ART.-NR.  
■ **794.30.994.000 / EB**  
■ **794.30.994.000 / 30**

450 / 500 **XC-F-W / EXC-F** 20 – 21

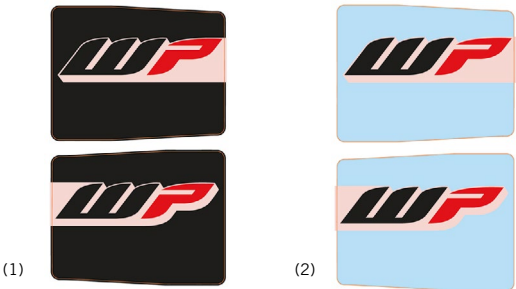
ART.-NR.  
■ **797.30.994.000 / EB**  
■ **797.30.994.000 / C1**



PROTECTIVE FORK STICKER SET

- For all 48 mm forks
- Extra strong film

ART.-NR.  
520.00.092 (1)      520.00.093 (2)

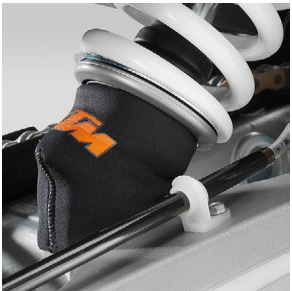


PDS PROTECTION

XC-W - 21      XCF-W/EXC-F - 21

- Protects the lower PDS bearing against dirt permeation
- Extends the service life of the lower PDS bearing

ART.-NR.  
595.04.090.050



SHOCK ABSORBER LINKAGE PROTECTION

SX/XC 16 - 21      SX-F/XC-F 16 - 21

- Easy to mount
- Helps protect the linkage from damage

ART.-NR.  
791.04.983.000

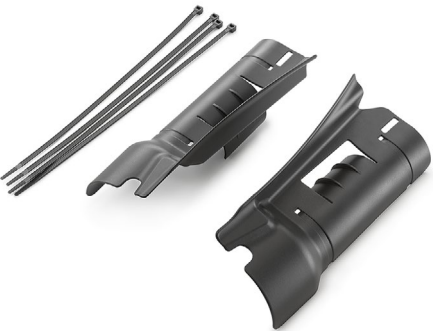


TRIPLE CLAMP PROTECTION

SX/XC 19 - 21      SX-F/XC-F 19 - 21

- Easy to mount
- Helps protect the lower triple clamp from roost

ART.-NR.  
797.08.994.000





FORK PROTECTOR

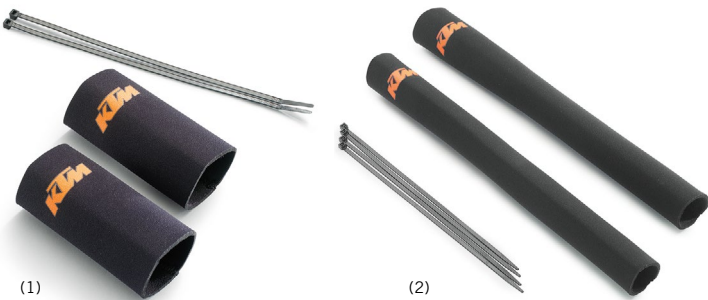
- For all 48 mm forks

– Ideal protection for sealing the fork
- For use with a closed fork protector

ART.-NR.

780.01.095.000 <sup>(1)</sup>

595.01.095.000 <sup>(2)</sup>



FORK SHOE PROTECTION KIT

SX/XC	15 - 21	XC-W	16 - 21
SX-F/XC-F	15 - 21	XCF-W/EXC-F	16 - 21

- Helps protect the fork shoes from damage
- Easy to mount

ART.-NR.

796.01.994.000



FORK PROTECTOR KIT

- Made of high-quality carbon
- For all 48 mm forks

ART.-NR.

790.01.994.000 / 49



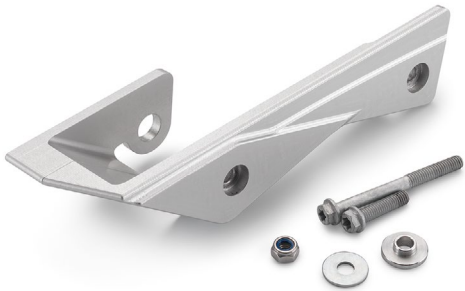
CHAIN GUIDE BRACKET PROTECTION

SX/XC	07 - 21	XC-W	08 - 21
SX-F/XC-F	07 - 21	XCF-W/EXC-F	08 - 21

- Made of high-strength aluminum
- Helps protect the chain guide bracket from major damage

ART.-NR.

781.04.974.100



SWINGARM PROTECTION

- Permanent protection against unattractive scratches and matte spots on the swingarm
- Helps protect from damage in the event of a fall

<b>XC-W</b>	12 - 21	<b>SX/XC</b>	12 - 21
<b>XCF-W/EXC-F</b>	12 - 21	<b>SX-F/XC-F</b>	11 - 21
ART.-NR. <b>781.04.994.100 / 30</b>		ART.-NR. <b>772.04.994.100 / 30</b>	



SLIDE PADS

Helps protect from damage in the event of a fall.

FOR FORK

<b>SX/XC</b>	15 - 21
<b>SX-F/XC-F</b>	15 - 21
<b>XC-W</b>	16 - 21
<b>XCF-W/EXC-F</b>	16 - 21

ART.-NR.  
**777.09.945.000** <sup>(1)</sup>

FOR SWINGARM

<b>SX/XC</b>	12 - 21
<b>SX-F/XC-F</b>	12 - 21
<b>XC-W</b>	- 21
<b>XCF-W/EXC-F</b>	- 21

ART.-NR.  
**781.10.945.100** <sup>(2)</sup>



FRAME PROTECTION STICKER SET

125 / 150 <b>SX / XC</b>	16 - 21	<b>SX-F / XC-F</b>	16 - 21
250 / 300 <b>SX / XC</b>	17 - 21	<b>XCF-W/EXC-F</b>	17 - 21

- Helps protect the frame without changing the slim lines of your motorcycle

ART.-NR.  

■

**794.03.994.100 / EB**

■

**794.03.994.100 / 30**

■

**794.03.994.100**





FRAME PROTECTION SET

SX/XC	19 - 21	XC-W	20 - 21
SX-F/XC-F	19 - 21	XCF-W/EXC-F	20 - 21

– Prevents abrasion of the frame by dirt, falls or the driver's boots

ART.-NR.  
■ 791.03.094.000 / EB      ■ 791.03.094.000 / 30



FOOTPEG SLIDERS

125 / 150 SX	16 - 21	SX-F / XC-F	16 - 21
250 SX / XC	17 - 21		

– Helps protect the footpegs from damage during a potential fall

ART.-NR.  
790.03.944.044



TRIPLE CLAMP PROTECTIVE FILM KIT

125 / 150 SX / XC	16 - 21	SX-F / XC-F	16 - 21
250 / 300 SX / XC	17 - 21		

Extra thick film protects the triple clamp from stone impacts. For use with factory triple clamps

SXS.13.450.460 and SXS.13.450.470 as well as triple clamp 781.01.999.020/04 and 781.01.999.022/04.

ART.-NR.  
781.08.999.020



## BRAKE CALIPER PROTECTION

---

- High stiffness and strength
- Made of high-quality carbon
- Optimal protection against stone impact
- Visual highlight

ART.-NR.  
**777.13.975.120**

Can be installed on brake caliper supports  
777.13.975.044, 796.13.975.044, 777.13.975.010/30,  
777.13.975.110/30, 781.13.975.044, 781.13.975.144,  
781.13.975.244, 789.13.975.044 or 789.13.975.144



## BRAKE DISC GUARD

---

- Helps protect the brake disc from stones and other solid obstacles
- Made of high-quality carbon

ART.-NR.  
**777.13.975.030 (CARBON)**

Can be fitted on the CNC brake calliper support  
777.13.975.044 or 777.13.975.110/30 or  
725.13.975.000/30





BRAKE DISC GUARD

SX/XC	15 - 21	XC-W	16 - 21
SX-F/XC-F	15 - 21	XCF-W/EXC-F	16 - 21

- Central adapter replaces the spacer sleeve on the wheel axle
- Allows tire changes, brake service etc. without removing the brake cover

ART.-NR.  
790.09.961.100 / 30 (UP TO 260 MM BRAKE DISC)



BRAKE DISC GUARD

SX/XC	04 - 21	XC-W	04 - 21
SX-F/XC-F	04 - 21	XCF-W/EXC-F	04 - 21

- Helps protect the brake disc in the event of a fall
  - High stiffness and strength
  - Helps protect the rear brake disc from stones and other solid obstacles
- CNC milled from high-strength aluminum
  - Lighter than series components

ART.-NR.  
■ 548.10.961.200 / 04      ■ 548.10.961.200 / 30



BRAKE CALIPER SUPPORT WITH BRAKE DISC GUARD

- Helps protect the brake disc in the event of a fall
  - High stiffness and strength
  - Helps protect the rear brake disc from stones and other solid obstacles
- CNC milled from high-strength aluminum
  - Lighter than series components

SX/XC	13 - 21	XC-W	04 - 21
SX-F/XC-F	13 - 21	XCF-W/EXC-F	04 - 21

ART.-NR.  
791.13.975.044      796.13.975.044





146  
147







## AIRFILTER







AIR FILTER DUST PROTECTION

**KTM** FACTORY RACING

125 /150 <b>SX/XC</b>	16 - 21	<b>SX-F/XC-F</b>	16 - 21	<b>XCF-W/EXC-F</b>	17 - 21
250 <b>SX/XC</b>	17 - 21	<b>XC-W</b>	17 - 21		

- Acts as an additional protective layer

– Recommended for extremely dusty conditions
- Coarse-pored air filter cover

ART.-NR.  
790.06.920.000



AIR FILTER WATER PROTECTION

**KTM** FACTORY RACING

125 /150 <b>SX/XC</b>	16 - 21	<b>SX-F/XC-F</b>	16 - 21	<b>XCF-W/EXC-F</b>	17 - 21
250 <b>SX/XC</b>	17 - 21	<b>XC-W</b>	17 - 21		

- Recommended in extremely wet conditions

ART.-NR.  
790.06.921.000



AIR FILTER SAND PROTECTION

**KTM** FACTORY RACING

125 /150 <b>SX/XC</b>	16 - 21	<b>SX-F/XC-F</b>	16 - 21	<b>XCF-W/EXC-F</b>	17 - 21
250 <b>SX/XC</b>	17 - 21	<b>XC-W</b>	17 - 21		

- Recommended for extremely dusty conditions

ART.-NR.  
790.06.922.000





150  
151







## NAVIGATION LUGGAGE

# SIDE BAGS SET

XC/XC-F 19 - 21  
XC-W 20 - 21

XCF-W/EXC-F 20 - 21

**ART.-NR.: 797.12.919.000**



- Robust and waterproof bag
- Waterproof roll closure
- Welded seams

- Ideal combination of quality and all-round usability
- Including all required assembly materials
- Special seat with belts included



## LUGGAGE BAG

XC-W 04 - 21 XCF-W/EXC-F 04 - 21

- Robust and waterproof bag
- Can be mounted without additional mounting material
- Welded seams
- Waterproof roll closure
- Resistant waterproof coating

ART-NR.  
781.12.978.200 (5 L)



## INNER BAG

- Keep your belongings dry and safe from dust with this handy and water resistant bag which can be placed inside the motorcycle luggage.
- Waterproof resistant coating
- Waterproof roll closure

ART-NR.  
765.12.924.000 (4 L)



## GPS BAG

SX/XC - 21 XC-W - 21  
SX-F/XC-F - 21 XCF-W/EXC-F - 21

- For waterproof storage of documents, maps, cellphones, navigation devices etc.
- Suitable for all KTM GPS holders
- Size: 170 x 130 x 35 mm

ART-NR.  
620.02.903.150



### SMARTPHONE CASE

- Helps protect your expensive smartphone from rain, dust or mud
- Optimal solution for quickly and securely attaching the smartphone to the vehicle

ART.-NR.

**617.12.990.100** (IPHONE 6/6S/7/8)

**617.12.990.000** (IPHONE 6/6S/7/8 PLUS)

**617.12.990.200** (IPHONE X/XS)

**617.12.991.200** (IPHONE XS MAX)

**617.12.991.300** (IPHONE XR)

**617.12.993.000** (IPHONE 11)

**617.12.992.800** (IPHONE 11 PRO)

**617.12.992.900** (IPHONE 11 PRO MAX)

**617.12.990.300** (GALAXY S8/S9)

**617.12.990.400** (GALAXY S8+/S9+)

**617.12.993.100** (GALAXY S10)

**617.12.993.200** (GALAXY S10+)

**617.12.993.300** (GALAXY S20)

**617.12.993.400** (GALAXY S20+)

**617.12.993.700** (GALAXY S20 ULTRA)



### SMARTPHONE UNIVERSAL ADAPTER

- Optimal solution for quickly and securely attaching the smartphone to the vehicle

– Dimensions: 66 x 55 mm (2.6 x 2.17 inch)

ART.-NR.

**617.12.991.000**



### SMARTPHONE BRACKET

- Universal and inconspicuous bracket for your smartphone
- Optimal solution for quickly and securely attaching the smartphone to the vehicle
- Can be clamped on the handlebar (including different adaptor)

– The arm can be rotated in any position for the perfect position for your smartphone

ART.-NR.

**617.12.991.100**





## GPS BRACKET

SX/XC	- 21	XC-W	- 21
SX-F/XC-F	- 21	XCF-W/EXC-F	- 21

- Suitable for all Garmin GPS devices
- Suitable for all TomTom GPS devices

- Suitable for the Touratech iBracket
- Mounting on the standard handlebar clamps

ART-NR.

930.02.903.100



## GPS BRACKET

XCF-W/EXC-F 17 - 21

- Suitable for all Garmin GPS devices
- Suitable for all TomTom GPS devices
- Suitable for the Touratech iBracket

- Mounting on the standard handlebar clamps
- Provides the option of attaching a plug and locking the GPS and holder so that they are theft-proof.

ART-NR.

760.12.992.244



## HANDLEBAR CROSS BRACE

- Universally applicable for mounting the GPS bracket

ART-NR.

601.12.092.070









**FREERIDE**

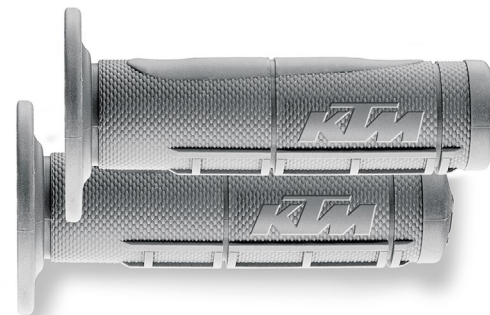
## GRIP SET

- Developed according to the requirements of our factory riders
- Less stress when riding
- Objective: comfort AND optimal grip
- Ergonomic contour adapted to the shape of the hand for maximum comfort
- Half waffle grip
- For a secure grip
- Three areas for the metal wire locking

ART.-NR.

548.02.021.000 (SOFT)

548.02.021.100 (MEDIUM)



## GRIP SET

- Combines the durability of the KTM standard grips with the comfort of the soft KTM grips
- Harder orange material on the inside and on the grip ends for long durability
- Softer black material on the outside for increased comfort

ART.-NR.

630.02.021.100 (CLOSED END)

630.02.021.200 (OPEN END)



## MUD GRIPS

- For a secure grip
- Maximum grip on the hand grip even in extremely muddy conditions

ART.-NR.

781.02.922.000





## GRIP DONUT SET

– Coated neoprene ring

– Simply pulled over the grips

ART.-NR.

U6.951.716



## SUPPORTING STRAP

FREERIDE E

14 - 21

– Specially developed for extreme conditions  
– Strap made from high-strength nylon

– Makes it easier to stand your motorcycle up

ART.-NR.

787.12.916.000



## CLAMP

FREERIDE

14 - 21

– CNC milled from high-strength aluminum  
– Elegant anodized surface  
– Visual highlight  
– Including plastic insert

– The brake or clutch fitting rotates in the event of a fall  
– Reduces the risk of a lever being broken  
– Suitable for all BREMBO® and FORMULA brake and clutch assemblies

ART.-NR.

777.02.944.000



## HANDGUARD

**FREERIDE** – 21

- Excellent weather protection
- Closed design
- 2-component plastic handguard
- Black middle section = maximum strength for optimum protection

- Colored top and bottom parts = highly flexible under the roughest conditions
- Improved optics

ART.-NR.

- 603.02.179.000 / EB (HIGH VERSION)
- 780.02.079.100 / EB (LOW VERSION)

- 603.02.179.100 / AB (HIGH VERSION)
- 780.02.079.200 / AB (LOW VERSION)

- 603.02.179.100 / 30 (HIGH VERSION)
- 780.02.079.200 / 30 (LOW VERSION)



## WRAP-AROUND HANDGUARD KIT

**FREERIDE** – 21

- Made of sturdy plastic
- Converts the originally open handguards into a closed version

- Compatible also with handguards 796.02.979.000/EB/AB/30 and 721.02.979.000/EB/AB/30

ART.-NR.

**796.02.979.044**



## WRAP-AROUND HANDGUARD KIT

**FREERIDE** – 21

- Made of robust plastic
- Fastening independent of fittings directly on the handlebars

- To convert the open, standard handguards to a closed version

ART.-NR.

■ 791.02.979.000 / EB

□ 791.02.979.000 / AB

■ 791.02.979.000 / 30





## HANDGUARD

FREERIDE -21

- Uncompromising race look
- Extremely light
- Open design
- 2-component plastic handguard
- Black middle section = maximum strength for optimum protection

- Colored top and bottom parts = highly flexible under the roughest conditions
- Fastening directly on the handlebar or with a special support directly on the fittings

ART.-NR.

■ 721.02.979.000 / EB

□ 721.02.979.000 / 28

■ 721.02.979.000 / 30



## HANDGUARD KIT

FREERIDE -21

- Excellent weather protection
- Maximum protection against falls, roost, branches, etc.
- Indispensable companion for heavy off-road and Supermoto use

- Wide, generous design in combination with sturdy aluminum bracket
- Helps prevent broken levers
- Made of robust plastic

ART.-NR.

■ 797.02.979.000 / EB

□ 797.02.979.000 / AB

■ 797.02.979.000 / 30



## FACTORY STEERING DAMPER

FREERIDE – 21

- Gain in stability at the front wheel
- Fully adjustable
- Top performance/ price ratio

- Well thought-out mounting of the damper enables individual handlebar adjustment
- 000.50.000.929 handle bar support kit required for use on MY16 and on XC from MY16

ART-NR.

**770.12.005.000**



## FACTORY STEERING DAMPER BRACKET

FREERIDE – 21

ART-NR.

**770.12.005.144**



## PHDS BRACKET FOR FACTORY STEERING DAMPER

FREERIDE – 21

- This bracket is required for fitting the progressive handlebar damping system (PHDS) SXS.07.125.200 in conjunction with a steering damper

ART-NR.

**770.12.005.644**





## STEERING DAMPER

FREERIDE -21

- High-end steering damper
- Maximum control on fast tracks
- Gain in stability at the front wheel
- Fully adjustable
- Well thought-out mounting of the damper enables individual handlebar adjustment
- Reduced weight
- Sensitive response behavior
- High speed DCC
- Developed according to the requirements of our factory drivers
- Optimum 25 click setting range
- Proven success with the KTM Works Rally Team

ART.-NR.

585.12.050.100



## STEERING DAMPER COUNTER BEARING

FREERIDE -21

ART.-NR.

772.12.905.444



## STEERING DAMPER BRACKET

FREERIDE -21

ART.-NR.

585.12.050.144



## PROGRESSIVE HANDLEBAR DAMPING SYSTEM (PHDS)

FREERIDE -21

- CNC milled handlebar mount with damping rubber inserts
- Gentle on wrists and shoulder joints
- Damping of hard shocks
- Absorption of chassis and engine vibrations
- Additional handlebar damping in horizontal direction
- Optimum steering precision
- Further dampers available in three different degrees of hardness (soft, medium, hard) for individual adjustment
- Handlebar height adjustable to 2 positions

ART.-NR.

SXS.07.125.200



HANDLEBAR MOUNT KIT

FREERIDE - 21

- Available in five different heights
  - Included in the kit are 2 x handlebar support lower parts and 2 x fastening bolts
- The upper parts and bolts required for clamping the handlebar are taken from the original handlebar support

ART.-NR.		
797.01.939.044 (32 MM)	797.01.939.144 (37 MM)	797.01.939.244 (42 MM)
797.01.939.344 (47 MM)	797.01.939.444 (52 MM)	



HANDLEBAR RISER

FREERIDE - 21

These CNC-machined, high-strength aluminum handlebar risers are extremely robust thanks to their special screw fastening (from below) on the triple clamp. Twisting and

bending are therefore practically impossible. Use of these handlebar risers is only possible on CNC-machined triple clamps. Available in three different heights.

ART.-NR.		
777.01.939.010 (10 MM)	777.01.939.020 (20 MM)	777.01.939.030 (30 MM)



HANDLEBAR PAD

FREERIDE - 21

Provides optimum protection.

Already a must at many events.

ART.-NR.
772.02.002.144





## HANDLEBAR ENDS

FREERIDE - 21

- CNC milled from high-strength aluminum
- Elegant anodized surface
- Visual highlight

- Prevents the hand grips from chafing in the event of a fall

ART-NR.

**548.02.005.000** (ORANGE ALUMINIUM ANODIZED)



## MIRROR

FREERIDE - 21

- Exceptionally robust

- Extremely light

ART-NR.

**502.12.040.000 / 30**



## RENTHAL TWINWALL HANDLEBAR

FREERIDE - 21

- The Twinwall, in the KTM orange design
- Two handlebars in one
- The exterior ensures maximum resistance to external damage
- Additionally hard anodized against corrosion
- The interior, made of a special alloy, is also hard anodized to protect it from damage by the handlebar controls

- Nylon inserts in the inner tube allow thinner walls
- Very good flex properties
- Comes with handlebar pad
- Dimensions: A = 118 mm, B = 811 mm, C = 74 mm

ART-NR.

**795.02.901.000 / 04** (RENTHAL TWINWALL 996)



DID YOU KNOW that all KTM CNC parts are manufactured from high grade aluminum, which not only looks great but can also stand up to the toughest

loads? The original factory look, anodized aluminum KTM PowerParts are just the thing to give your KTM that something special.

## CLUTCH RESERVOIR COVER

FREERIDE - 21

ART.-NR.  
720.02.903.000



## BRAKE CYLINDER COVER

FREERIDE - 21

ART.-NR.  
700.13.903.000



## SHROUD SET

FREERIDE E-XC 18 - 21

ART.-NR.  
☐ 700.08.054.000 / 28  
☒ 700.08.054.000 / 30



## FENDER

FREERIDE E-XC 18 - 21

ART.-NR.  
☐ 472.08.010.000 / 28  
☒ 472.08.010.000 / EB



## SIDE FAIRING

FREERIDE E-XC 18 - 21

ART.-NR.  
☐ 700.07.025.050 / 28



## REAR FENDER

FREERIDE E-XC 18 - 21

ART.-NR.  
☐ 700.08.113.100 / 28



## SIDE FAIRING

FREERIDE E-XC 18 - 21

ART.-NR.  
☐ 700.07.025.051 / 28



## FORK PROTECTOR KIT

FREERIDE E-XC 18 - 21

ART.-NR.  
☐ 472.01.094.000 / 28



## HEADLIGHT MASK

FREERIDE E-XC 18 - 21

ART.-NR.  
☐ 721.08.001.000 / 28  
☒ 721.08.001.000 / EB





## RACELINE GRAPHICS KIT

FREERIDE E-XC

18 - 21

- Designed to completely change the original look of your motorcycle
- Made of the highest quality materials
- Visual highlight
- Glue the graphics kit directly onto the standard fairing parts
- Perfect fit
- Can be removed without leaving any residue
- Personalize the look of your motorcycle

ART-NR.

721.08.190.000



## SOFT SEAT

FREERIDE E

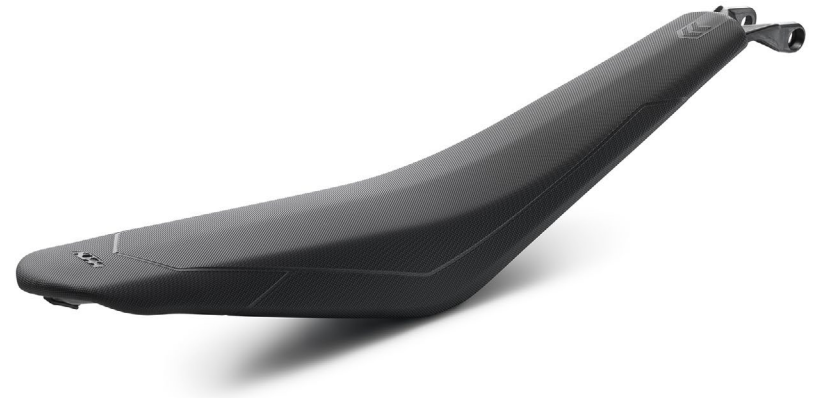
- 21

Particularly elastic foam for extra comfort.

Standard height.

ART-NR.

700.07.940.000



## LOW SEAT

FREERIDE E

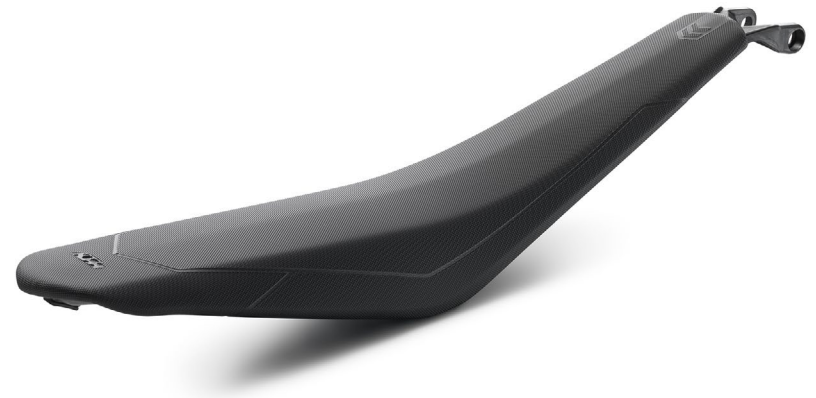
- 21

Also provides shorter riders with optimum control of the motorcycle in difficult terrain.

Approx. 7 mm lower than the standard seat.

ART-NR.

700.07.040.000



## PIVOT PEGZ

FREERIDE – 21

- Move along with weight shift
- Permanent contact between boot and footpeg
- Extends the service life of your boots
- Enlarged tread area
- More control
- More curve pressure
- Easier and faster weight shifting
- Easier shifting and braking
- Spring-mounted, 20-degree rotational movement possible towards front and rear

ART.-NR.  
**780.03.940.244**



## LOWERING KIT

FREERIDE E-XC 18 - 21

- Perfect compromise between maximum chassis performance and lowest possible vehicle height
- No restrictions on riding dynamics
- Enables shorter drivers to also achieve the optimum seat height
- Made of the highest quality materials
- Tested in the toughest conditions
- Developed together with the vehicle

ART.-NR.  
**721.12.955.044** (-25 MM)



## FRAME PROTECTION STICKER SET

FREERIDE – 21

- Helps protect the frame without changing the slim lines of your motorcycle

ART.-NR.  
**720.03.994.000**





## FORK PROTECTOR

FREERIDE - 21

- Made from neoprene
- Ideal protection for sealing the fork

- For use with the open fork protector
- For fork tube with a diameter of 43 mm

ART.-NR.

595.01.095.100



## VALVE CAP SET

- Anodized valve caps

ART.-NR.

777.10.976.050 / 04 (1) WITH VALVE OPENER FUNCTION)

777.10.976.150 / 04 (2) WITHOUT VALVE OPENER FUNCTION)



## BLEEDER VALVE

FREERIDE - 21

- Specially developed for WP forks
- Fork bleeding using finger pressure

- Developed together with the vehicle

ART.-NR.

791.01.900.000



## WHEEL RIM STICKER KIT

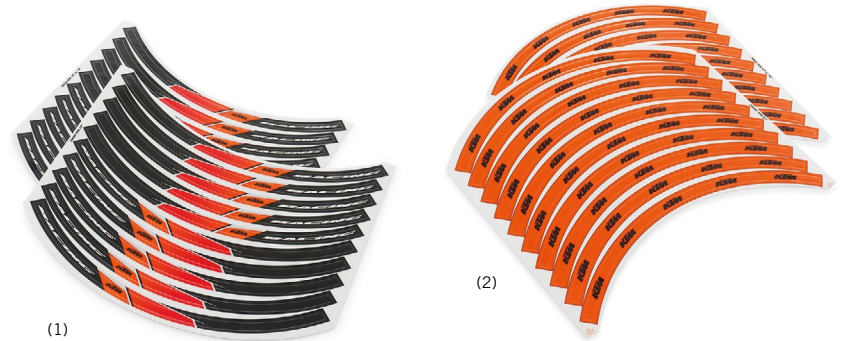
- Pre-cut stickers
- Suitable for front and rear wheel rim

- For wheel size 18/21"; 19/21"

ART.-NR.

780.09.099.000 (1)

781.09.999.000 (2)



## HUB STICKER KIT

- 4 pieces 37 mm x 31 mm

- 4 pieces 48 mm x 40 mm

ART.-NR.

U6.951.087









## X-RING CHAIN

FREERIDE - 21

- Greater flexibility and better running characteristics
- Constant and permanent lubrication
- Better sealing against water and dirt
- Significantly longer durability

ART.-NR.

■ 780.10.167.118



## CHAIN GUIDE

FREERIDE - 21

- Race look
- Visual highlight

ART.-NR.

781.04.070.100 / 04



## REAR SPROCKET

FREERIDE - 21

- Made of high-strength aluminum
- Elegant anodized surface
- Visual highlight
- Extremely light
- Reduces the rotating masses
- Precisely ground to 0.002 mm, dead straight and impact-free chain track
- Free from vibration – therefore the highest power transmission efficiency
- Angular depressions between the teeth prevent small stones and dirt particles from getting stuck under the chain

ART.-NR.

720.10.951.046 / 04 (T46)

720.10.951.048 / 04 (T48)



WAVE BRAKE DISC

FREERIDE E 12 - 21

- Outer ring made of stainless high-performance brake steel
- Inner ring anodized
- Floating
- Minimal wear on brake pads
- Larger diameter for added braking performance

ART.-NR.  
472.09.960.000



WAVE BRAKE DISC

FREERIDE E 12 - 21

- Outer ring made of stainless high-performance brake steel
  - Minimal wear on brake pads
- The rear brake caliper mounting kit 720.10.960.044 is required for mounting.

ART.-NR.  
700.10.160.000 (230 MM)





## BRAKE CALIPER SUPPORT

FREERIDE - 21

- High stiffness and strength
- CNC milled from high-strength aluminum

- Lighter than series components
- Improved braking performance

ART.-NR.

725.13.975.000 / 30



## BRAKE DISC GUARD

FREERIDE - 21

- Helps protect the brake disc from roost and other solid obstacles
- Made of high-quality carbon

Can be fitted on the CNC brake calliper support  
777.13.975.044 or 777.13.975.110/30 or  
725.13.975.000/30.

ART.-NR.

777.13.975.030 (CARBON, REAR)



## BRAKE DISC GUARD

FREERIDE E 18 - 21

- Central adapter replaces the spacer sleeve on the wheel axle

- Allows tire changes, brake service etc. without removing the brake cover

ART.-NR.

472.09.961.000 (FRONT)



## LUGGAGE BAG

**FREERIDE** - 21

- Robust and waterproof bag
- Can be mounted without additional mounting material
- Welded seams
- Waterproof roll closure
- Resistant waterproof coating

ART-NR.  
**781.12.978.200** (5 L)



## GPS BAG

**FREERIDE** - 21

- For waterproof storage of documents, maps, cellphones, navigation devices etc.
- Suitable for all KTM GPS holders
- Size: 170 x 130 x 35 mm

ART-NR.  
**620.02.903.150**



## GPS BRACKET

**FREERIDE** - 21

- Suitable for all Garmin GPS devices
- Suitable for all TomTom GPS devices
- Suitable for the Touratech iBracket
- Mounting on the standard handlebar clamps

ART-NR.  
**930.02.903.100**





## SMARTPHONE CASE

- Helps protect your expensive smartphone from rain, dust or mud
- Optimal solution for quickly and securely attaching the smartphone to the vehicle

ART.-NR.

617.12.990.100 (IPHONE 6/6S/7/8)  
 617.12.990.000 (IPHONE 6/6S/7/8 PLUS)  
 617.12.990.200 (IPHONE X/XS)  
 617.12.991.200 (IPHONE XS MAX)  
 617.12.991.300 (IPHONE XR)  
 617.12.993.000 (IPHONE 11)  
 617.12.992.800 (IPHONE 11 PRO)  
 617.12.992.900 (IPHONE 11 PRO MAX)

617.12.990.300 (GALAXY S8/S9)  
 617.12.990.400 (GALAXY S8+/S9+)  
 617.12.993.100 (GALAXY S10)  
 617.12.993.200 (GALAXY S10+)  
 617.12.993.300 (GALAXY S20)  
 617.12.993.400 (GALAXY S20+)  
 617.12.993.700 (GALAXY S20 ULTRA)

- Smartphone can be easily removed with its cover



## SMARTPHONE UNIVERSAL ADAPTER

- Optimal solution for quickly and securely attaching the smartphone to the vehicle

- Dimensions: 66x55 mm (2.6x2.17 inch)

ART.-NR.

617.12.991.000



## SMARTPHONE BRACKET

- Universal and inconspicuous bracket for your smartphone
- Optimal solution for quickly and securely attaching the smartphone to the vehicle
- Can be clamped on the handlebar (including different adaptor)

- The arm can be rotated in any position for the perfect position for your smartphone

ART.-NR.

617.12.991.100







176  
177







**50 / 65 / 85 SX**  
**SX-E 5**

FACTORY TRIPLE CLAMP

- CNC milled aluminum triple clamp
  - Elegant anodized surface
  - Visual highlight
  - Optimally tuned steering stem stiffness
- 100% alignment of the fork tubes
  - Ideal flexibility – precisely customized to the WP fork
  - Including steering stem with steering head bearing already pressed on

65 SX	12 - 21	85 SX	03 - 21
ART.-NR.		ART.-NR.	
460.01.999.022 / 04	(OFFSET 22 MM)	471.01.999.114 / 04	(OFFSET 14 MM)

FACTORY START

- Provides more traction when starting
  - Mounted directly on the fork
  - Made of high-strength aluminum
- Elegant anodized surface
  - Pure race feeling

65 SX	02 - 21	85 SX	03 - 21
ART.-NR.		ART.-NR.	
463.01.996.000		472.01.996.000	

105 FACTORY KIT

- 105 Factory kit with more displacement (105 instead of 85)
  - Significantly more torque
- Significantly more performance

ART.-NR.
476.49.905.044





## IDLE AIR ADJUSTMENT SCREW

65 SX 04 - 21

– The larger outer diameter of the screw head counteracts the effect of soiling in the adjustment screw channel

– Furthermore, the screw is longer and easier to access for setting the idle mixture on the carburetor

ART.-NR.

461.31.917.000



## POWER REDUCTION KIT

50 SX MINI 14 - 21

– Increased safety for the racers of the future

ART.-NR.

452.12.948.244



## POWER REDUCTION KIT

50 SX 14 - 21

– Increased safety for the racers of the future

ART.-NR.

452.12.948.344



## AKRAPOVIČ "SLIP-ON LINE"

CCCU0

85 SX 18 - 21

- Made from high grade titanium
- Carbon silencer cap
- Permanently welded brackets

- Significantly more torque
- Significantly more performance
- AKRAPOVIČ logo sticker on silencer

ART.-NR.

472.05.979.100



## FMF FATTY EXPANSION CHAMBER

CCCU0

85 SX 18 - 21

- Extra strong sheet steel
- Nickel-plated surface
- Wide, even engine speed range
- Higher speed

- More traction
  - Better throttle control
- Combination with FMF silencer recommended.

ART.-NR.

472.05.907.000



## FMF FATTY EXPANSION CHAMBER

CCCU0

50 SX 09 - 21

- Extra strong sheet steel
- Nickel-plated surface
- Wide, even engine speed range
- Higher speed

- More traction
  - Better throttle control
- Combination with FMF silencer recommended.

ART.-NR.

SXS.09.050.500





**FMF POWERCORE 2 SILENCER**

CCC00

85 SX 18 - 21

- Specially developed for use in motocross
- Silencer housing made of high-grade aluminum
- Stainless steel silencer cap
- Rich sound
- Low noise level
- Permanently welded brackets

ART.-NR.

**472.05.979.001**

- Easy to mount
- Perfect fit
- Reduced weight

For a system with optimized performance and perfect balance we recommend the combination with the FMF Fatty expansion chamber.

**FMF POWERCORE 2 SILENCER**

CCC00

50 SX 16 - 21

- Specially developed for use in motocross
- Silencer housing made of high-grade aluminum
- Stainless steel silencer cap
- Rich sound
- Low noise level
- Permanently welded brackets

ART.-NR.

**453.05.979.000**

- Easy to mount
- Perfect fit
- Reduced weight

For a system with optimized performance and perfect balance we recommend the combination with the FMF Fatty expansion chamber.



## FACTORY EXPANSION CHAMBER

CCCUG

65 SX 16 - 21

- Nickel-plated surface
- Rich sound
- Significantly more performance
- Made from high-tensile, durable steel
- Improved torque curve

ART-NR.

463.05.907.100

- Extremely low weight

For a perfectly tuned and performance-optimized system we recommend the combination with the factory silencer.



## FACTORY SILENCER

CCCUG

65 SX 16 - 21

- Specially developed for use in motocross
- Silencer housing made of high-grade aluminum
- Tangible performance boost over the entire engine speed range
- Rich sound
- Low noise level
- Permanently welded brackets

ART-NR.

463.05.979.000

- Easy to mount
- Perfect fit
- Reduced weight

For a system with optimized performance and perfect balance we recommend the combination with the Factory expansion chamber.









RENTHAL HANDLEBAR

- Tested in complex and specially-developed test cycles
  - Made of high-strength aluminum
- Position markings for easy adjustment
  - Comes with handlebar pad

50 SX	01 - 21	65 SX	02 - 21
ART.-NR.		ART.-NR.	
U6.912.010		U6.950.997	



HANDLEBAR

- 85 SX      13 - 21

  - Tested in complex and specially-developed test cycles
  - Made of high-strength aluminum
- Position markings for easy adjustment
  - Dimensions: A=113 mm / B=779 mm / C=75 mm

ART.-NR.  
471.02.901.100 / 04



HANDLEBAR

- SX-E 5      20 - 21

  - Tested in complex and specially-developed test cycles
- Made of high-strength aluminum

ART.-NR.  
454.02.001.000 / 04





## HANDLEBAR RISER

85 SX 13 - 21

These CNC-machined, high-strength aluminum handlebar risers are extremely robust thanks to their special screw fastening (from below) on the triple clamp. Twisting and

bending are therefore practically impossible. Use of these handlebar risers is only possible on CNC-machined triple clamps. Available in three different heights.

ART.-NR.

777.01.939.010 (10 MM)

777.01.939.020 (20 MM)

777.01.939.030 (30 MM)



## HANDLEBAR MOUNT KIT

– Available in five different heights.  
– Included in the kit are 2 x handlebar support lower parts and 2 x fastening bolts

– The upper parts and bolts required for clamping the handlebar are taken from the original handlebar support

85 SX 13 - 21

ART.-NR.

797.01.939.044 (32 MM)

85 SX 13 - 21  
SX-E 5 20 - 21

ART.-NR.

797.01.939.144 (37 MM)

797.01.939.244 (42 MM)

797.01.939.344 (47 MM)

797.01.939.444 (52 MM)



## PROGRESSIVE HANDLEBAR DAMPING SYSTEM (PHDS)

85 SX 13 - 21

– CNC milled handlebar mount with damping rubber inserts  
– Gentle on wrists and shoulder joints  
– Damping of hard shocks  
– Absorption of chassis and engine vibrations  
– Additional handlebar damping in horizontal direction

– Optimum steering precision  
– Further dampers available in three different degrees of hardness (soft, medium, hard) for individual adjustment  
– Handlebar height adjustable to 2 positions

ART.-NR.

SXS.07.125.200



CLAMP

65 SX	14 - 21
85 SX	13 - 21

- CNC milled from high-strength aluminum
  - Elegant anodized surface
  - Visual highlight
  - Including plastic insert
- The brake or clutch fitting rotates in the event of a fall
  - Reduces the risk of a lever being brokenSuitable for all BREMBO® and FORMULA brake and clutch assemblies

ART.-NR.  
777.02.944.000



LOCK-ON GRIP SET

50 SX MINI	12 - 21	65 SX	09 - 21
50 SX	12 - 21	85 SX	03 - 17

- Right grip permanently glued to the throttle grip
  - Left grip with aluminum clamping ring for fixing on the handlebar
- Inconvenient gluing and securing with wire no longer necessary

ART.-NR.  
■ 781.02.924.000 (CLOSED END)



LOCK-ON GRIP SET

85 SX	18 - 21
-------	---------

- Right grip permanently glued to the throttle grip
  - Left grip with aluminum clamping ring for fixing on the handlebar
- Inconvenient gluing and securing with wire no longer necessary

ART.-NR.  
■ 790.02.924.100 (CLOSED END)





## GRIP DONUT SET

– Coated neoprene ring

– Simply pulled over the grips

ART.-NR.

U6.951.716



## HANDGUARD

65 **SX** 14 – 21  
85 **SX** 13 – 21

– Uncompromising race look  
– Extremely light  
– Open design  
– 2-component plastic handguard  
– Black middle section = maximum strength  
for optimum protection

– Colored top and bottom parts = highly flexible  
under the roughest conditions  
– Fastening directly on the handlebar or with a  
special support directly on the fittings

ART.-NR.

■ 721.02.979.000 / EB

□ 721.02.979.000 / 28

■ 721.02.979.000 / 30



## MUD GRIPS

– For a secure grip

– Maximum grip on the hand grip even  
in extremely muddy conditions

ART.-NR.

781.02.922.000



# // CONQUER THE TOUGHEST TERRAIN!

## WP SUSPENSION

PERFORMANCE is more than a word to us – it is central to all we do. To allow you to perform at your highest level, WP Suspension is dedicated to developing performance-focused suspensions and equipment that deliver reliability and consistency to motorcyclists. So, whether you're a professional racer or an avid leisure motorcyclist, you benefit from the same single-minded approach, that allows the world's most fastest to get in front. WP Suspensions relentless pursuit of winning performance fuels our continued INNOVATION and product progression. With a network consisting 139 AUTHORIZED CENTERS in 28 countries, we strive to provide the best service and guidance across the board to support our community.

## WP XACT PRO 7535 FORK



With the WP XACT PRO 7535 fork for KTM sport minicycles, you can master any offroad challenge with flying colors. With adjustable rebound damping, compression damping and individually adjustable spring preload, your bike is always perfectly adapted to you and the track and supports you on your way to the podium. Due to the high quality manufacturing and the use of high-tech materials you spend less time in the pits and can fully concentrate on the competition.

- Adjustable rebound damping
- Adjustable compression damping
- Spring preload individually adjustable
- Always optimally adapted – All settings can be carried out externally and with standard tools
- Low maintenance due to the use of high-end materials
- Fitment for 65 SX



## WP XACT PRO 7736 SHOCK

High-end on a small scale. The XACT PRO 7736 shock absorber for KTM sport minicycles is the perfect companion to fight your way to the top. The high-quality manufacturing with friction-optimized components and the latest technology brings traction to the rear wheel and performance on the track. Thanks to various external adjustment options, your bike is always adapted to your current weight and size and helps you achieve new best times with the minimum of physical effort.

- Adjustable rebound damping
- Adjustable high & low speed compression
- Stepless adjustable spring preload
- All adjustments externally performable with standard tools
- Fitment for 50 SX and 65 SX







## WP XACT PRO 7543 FORK



Superior by far with WP TECHNOLOGY – The XACT PRO 7443 fork equipped with WP CONE VALVE TECHNOLOGY for the KTM 85 SX is individually adjustable and, thanks to the unlimited opening ability of the conical valve, provides the necessary comfort to keep a clear head even on demanding tracks.

- More comfort when using harder set-ups
- Unlimited opening up of WP Cone Valve so harshness reduced
- No sealing surface so minimum drop of pressure after valves opens
- No shims, therefore no loss of damping because of bent shims
- HQ coating
- All adjustments made externally



## WP XACT PRO 8946 SHOCK



The power-up for your rear wheel. The WP XACT PRO 8946 shock was developed in motorsports for you. Suitable for the KTM 85 SX, the WP XACT PRO 8946 shock absorber is the answer to the demand for more grip, traction and significantly improved acceleration. Thanks to its various external adjustment possibilities, the shock absorber is perfect for accompanying young riders from one victory to the next, always ensuring the optimum damping and spring performance for every weight and size.

- TXN adjuster guarantees, more rebound damping and more control
- You feel more confident and you have more comfort
- The rider experiences much less physical strain
- You feel more grip traction of the rear wheel, you accelerate faster



\*\*Products arriving early summer 2021

These parts are available only directly via your WP Authorized Center Network. To find the right article number for your bike, visit the suspension configurator at [www.wp-suspension.com/product-finder](http://www.wp-suspension.com/product-finder) or directly search for your WP Authorized Center at [www.wp-suspension.com/authorized-centers](http://www.wp-suspension.com/authorized-centers).

\*Images are concept images. actual product may vary from product depicted above





DO YOU KNOW that all KTM CNC parts are manufactured from highest quality aluminum and therefore not only look good, they also withstand the toughest treatment? With the anodized aluminum

components in the original factory look from the KTM PowerParts range, you can turn your KTM into something very special.

## OUTER CLUTCH COVER

- Uncompromising race look
- CNC milled from high-strength aluminum
- Resistant to the toughest stresses and strains

50 SX MINI 09 - 21  
50 SX 09 - 21

85 SX 18 - 21

ART.-NR.  
SXS.13.050.034 (1)

ART.-NR.  
472.30.926.000 (2)

## FACTORY IGNITION COVER

- Uncompromising race look
- CNC milled from high-strength aluminum
- Resistant to the toughest stresses and strains

50 SX 09 - 21

65 SX 09 - 21

ART.-NR.  
SXS.14.050.132 (1)

ART.-NR.  
SXS.14.065.032 (2)

## CRANKCASE PROTECTION

65 SX 09 - 21

- CNC milled from high-strength aluminum
- Easy to mount
- Optimal protection against stone impact
- Helps prevent damage to the engine housing in the event of chain cracks
- No stones drawn in between chain and engine housing (gentle on the material)

ART.-NR.  
SXS.12.065.044



(1)



(2)



(1)



(2)





## CLUTCH SLAVE CYLINDER PROTECTION

85 SX 18 - 21

- CNC milled from high-strength aluminum
- Best possible effective protection for the clutch slave cylinder
- Helps prevent damage to the engine housing in the event of chain cracks

- No stones drawn in between chain and engine housing (gentle on the material)
- Helps prevent from damage in the event of a fall

ART.-NR.

472.32.975.044



These high-quality aluminum CNC components feature a superior abrasion-resistant eloxal coating and make a bold visual statement.

## ASSEMBLY CHAIN TENSION ADJUSTER KIT

50 SX 16 - 21

ART.-NR.

SXS.16.050.044



## COMPRESSION ADJUSTER

50 / 65 SX 17 - 21  
85 SX 18 - 21

ART.-NR.

791.01.920.000 / 04



## BRAKE CYLINDER COVER

65 SX 14 - 21  
85 SX 13 - 21

ART.-NR.

700.13.903.000



## OIL PLUG

50 / 65 SX 09 - 21  
85 SX 08 - 21

ART.-NR.

794.30.920.044



## CLUTCH RESERVOIR COVER

65 SX 14 - 21  
85 SX 13 - 21

ART.-NR.

720.02.903.000



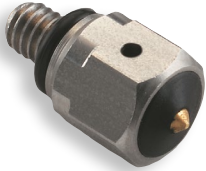
### BLEEDER VALVE

50/65 SX 17 - 21  
85 SX 18 - 21

- Specially developed for WP forks
- Fork bleeding using finger pressure

- Developed together with the vehicle

ART.-NR.  
791.01.900.000



### VALVE CAP SET

50/65 SX 17 - 21  
85 SX 18 - 21

- Anodized valve caps

- With valve opener function

ART.-NR.  
777.10.976.050 / 04



### VALVE CAP SET

50/65 SX 17 - 21  
85 SX 18 - 21

- Anodized valve caps

ART.-NR.  
777.10.976.150 / 04



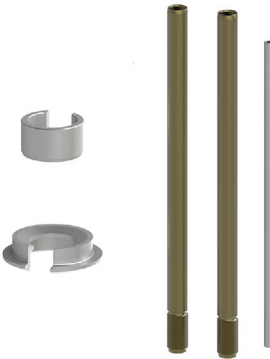
### LOWERING KIT

50 SX 17 - 21  
SX-E 5 20 - 21

- Perfect compromise between maximum chassis performance and lowest possible vehicle height
- No restrictions on riding dynamics
- Enables shorter drivers to also achieve the optimum seat height

- Made of the highest quality materials  
- Tested in the toughest conditions  
- Developed together with the vehicle

ART.-NR.  
454.12.955.044S (-68 MM)





## HIGH SEAT

85 SX 18 - 21

- Resistant coating
- Grow a bit more with the bike

– For the slightly taller racer of the future

ART.-NR.  
472.07.940.000



## LOW SEAT

85 SX 18 - 21

- Resistant coating

– Enables shorter riders to also achieve the optimum seat height

ART.-NR.  
472.07.940.200



## STEP-UP-SEAT

85 SX 18 - 21

- Developed according to the requirements of our factory riders
- Resistant coating

– Special gradation for good grip even when accelerating hard

– Standard seat height

ART.-NR.  
472.07.940.400



## FACTORY SEAT

SX-E 5 20 - 21

- Custom designed seat for an uncompromising look
- Resistant coating
- Seat cover with transversely stitched ribs

– Maximum grip with unrestricted freedom of movement

– Standard seat height

ART.-NR.  
453.07.240.000



FRAME PROTECTION SET

85 SX 18 - 21

– Help prevent abrasion of the frame by dirt, falls or the driver's boots

ART.-NR.  
472.03.094.000 / 33



FRAME PROTECTION STICKER SET

– Help prevent the frame without changing the slim lines of your motorcycle

50 SX 16 - 21

ART.-NR.  
453.03.994.000 / EB

65 SX 16 - 21

ART.-NR.  
463.03.994.000 / EB

85 SX 18 - 21

ART.-NR.  
472.03.994.000 / EB

SX-E 5 20 - 21

ART.-NR.  
454.03.994.000 / EB



FACTORY FUEL CAP

– CNC milled from high-strength aluminum  
– Not lockable

– Extremely fast and keyless refueling

65 SX 10 - 21

ART.-NR.  
781.07.908.144

85 SX 13 - 21

ART.-NR.  
777.07.908.244





## FACTORY FUEL CAP VENT

– CNC milled from high-strength aluminum  
– Elegant anodized surface

– Visual highlight

ART.-NR.

U6.951.010



## FRONT NUMBER PLATE

85 SX 18 - 21

ART.-NR.

472.08.007.000 / 28

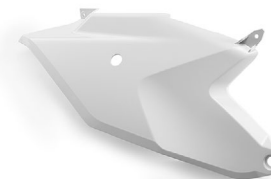


## AIRFILTER SIDE

85 SX 18 - 21

ART.-NR.

472.06.004.000 / 28



## FENDER

85 SX 18 - 21

ART.-NR.

□ 472.08.010.000 / 28

■ 472.08.010.000 / EB



## AIR FILTER BOX COVER

85 SX 18 - 21

ART.-NR.

472.06.005.000 / 28



## SHROUD SET

85 SX 18 - 21

ART.-NR.

472.08.054.000 / EB



## REAR FENDER

85 SX 18 - 21

ART.-NR.

472.08.013.000 / EB



## AIR FILTER BOX

85 SX 18 - 21

ART.-NR.

472.06.001.000 / 28



## FORK PROTECTOR KIT

85 SX 18 - 21

ART.-NR.

472.01.094.000 / 28



## FACTORY GRAPHICS KIT

50 SX 16 - 21

- Designed to completely change the original look of your motorcycle
- Glue the graphics kit directly onto the standard fairing parts
- Can be removed without leaving any residue
- Made of the highest quality materials
- Visual highlight
- Perfect fit
- Personalize the look of your motorcycle
- Race look

ART.-NR.  
453.08.990.000



## FACTORY GRAPHICS KIT

65 SX 16 - 21

- Designed to completely change the original look of your motorcycle
- Glue the graphics kit directly onto the standard fairing parts
- Can be removed without leaving any residue
- Made of the highest quality materials
- Visual highlight
- Perfect fit
- Personalize the look of your motorcycle
- Race look

ART.-NR.  
463.08.990.000



## FACTORY GRAPHICS KIT

SX-E 5 20 - 21

- Designed to completely change the original look of your motorcycle
- Glue the graphics kit directly onto the standard fairing parts
- Can be removed without leaving any residue
- Made of the highest quality materials
- Visual highlight
- Perfect fit
- Personalize the look of your motorcycle
- Race look

ART.-NR.  
454.08.990.000





## FACTORY GRAPHICS KIT

85 SX 18 - 21

- Designed to completely change the original look of your motorcycle
- Glue the graphics kit directly onto the standard fairing parts
- Can be removed without leaving any residue
- Made of the highest quality materials
- Visual highlight
- Perfect fit
- Personalize the look of your motorcycle
- Race look

ART.-NR.

472.08.990.000



## PROTECTIVE FORK STICKER SET

85 SX 05 - 21

Extra thick film; protects the outer tubes against roost impact.

ART.-NR.

520.00.140



FLAME BRAKE DISC

85 SX 21

- Outer ring made of stainless high-performance brake steel
- No fading
- Minimal wear on brake pads
- Significantly longer lasting
- With Flame design for added braking performance
- Extra thick: 4.6 mm

ART-NR.  
789.10.960.000 (220 MM)

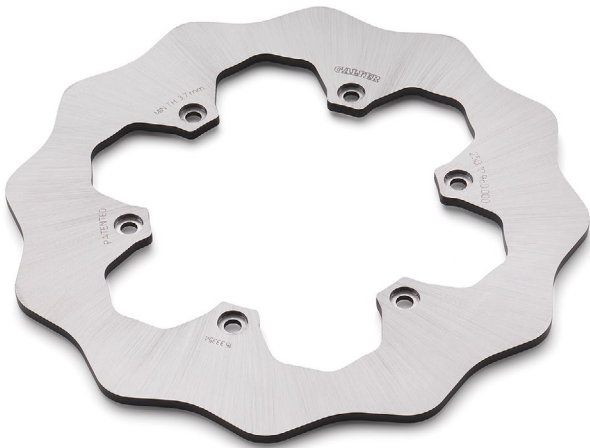


WAVE BRAKE DISC

85 SX 21

- Full version for muddy track conditions
- Minimal wear on brake pads
- Significantly longer lasting

ART-NR.  
250.10.960.000 (220 MM)





## BRAKE DISC GUARD

85 SX 13 - 21

- Protects the brake disc from stones and other solid obstacles
- Made of high-quality carbon

ART.-NR.  
**777.13.975.030** (CARBON REAR)

Can be fitted on the CNC brake calliper support  
777.13.975.044 or 777.13.975.110/30 or  
725.13.975.000/30.



## BRAKE DISC GUARD

85 SX 18 - 21

- Central adapter replaces the spacer sleeve on the wheel axle

ART.-NR.  
**472.09.961.000** (FRONT)

- Allows tire changes, brake service etc. without removing the brake cover



CHAIN

- Specially developed for use in motocross
- No O- or Z-rings & minimum loss of power and good durability

85 SX	- 21	65 SX	03 - 21	50 SX / MINI	03 - 21
ART.-NR.		ART.-NR.		ART.-NR.	
471.10.965.124		461.10.165.112		451.10.265.104	



REAR SPROCKET

- 85 SX MINI 18 - 21

  - Made of high-strength aluminum
  - Elegant anodized surface
  - Visual highlight
  - Extremely light
  - Reduces the rotating masses
- Precisely ground to 0.002 mm, dead straight and impact-free chain track
  - Free from vibration – therefore the highest power transmission efficiency

ART.-NR.			
472.10.951.048 / 04 (T48)	472.10.951.049 / 04 (T49)	472.10.951.050 / 04 (T50)	

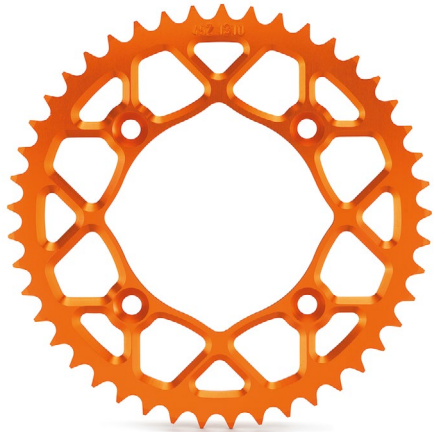


REAR SPROCKET

- SX-E 5 20 - 21

  - Made of high-strength aluminum
  - Elegant anodized surface
  - Visual highlight
  - Extremely light
  - Reduces the rotating masses
- Precisely ground to 0.002 mm, dead straight and impact-free chain track
  - Free from vibration – therefore the highest power transmission efficiency

ART.-NR.			
454.10.051.045 / 04 (T45)	454.10.051.046 / 04 (T46)	454.10.051.047 / 04 (T47)	





## SUPERSPROX STEALTH REAR SPROCKET

65 SX - 21

- Teeth made of high-strength steel, for an extra long service life
- Aluminum center section, reduces unsprung masses
- Permanently joined together with high-strength rivets

- At least three times longer service life than other aluminum rear sprockets
- 50 % lighter than steel rear sprockets
- Longer service life of the entire drivetrain kit

ART.-NR.

461.10.051.150 / 04 (T50)



## RENTHAL REAR SPROCKET

- Made exclusively for KTM by Renthal, these orange anodized rear sprockets are used by the KTM Factory Race teams

- Lightweight, durable and provide great performance.

50 SX 09 - 21

ART.-NR.

U6.913.128 (T50)

65 SX 09 - 21

ART.-NR.

U6.951.251 (T46)

U6.911.024 (T47)

U6.951.252 (T48)

U6.951.253 (T49)

85 SX 09 - 21

ART.-NR.

U6.951.254 (T44)

U6.951.255 (T45)

U6.951.256 (T46)

U6.951.257 (T47)

U6.951.258 (T48)



## CHAIN GUIDE

50 / 65 SX 20 - 21  
SX-E 5 20 - 21

- Race look

- Visual highlight

ART.-NR.

463.04.070.000 / EB1



## SKID PLATE

- Endurance-tested for the toughest off-road applications
- Easy to mount
- Extremely durable
- Made of high-strength aluminum
- Highest quality workmanship

- Most effective protection for frame and engine
- Extremely resistant fastening system
- Custom design
- Thickness 4 mm

65 SX 09 - 21

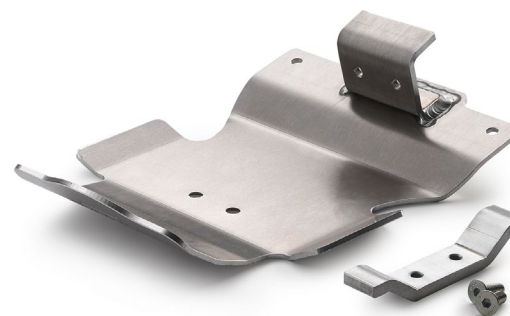
ART.-NR.

462.03.990.000

85 SX 18 - 21

ART.-NR.

472.03.990.000



**AIR FILTER DUST PROTECTION**

- 85 SX

18 - 21
- Extends the filter service intervals

– Recommended for extremely dusty conditions
- Washable
- ART-NR.

472.06.920.000



**AIR FILTER SAND PROTECTION**

- 85 SX

18 - 21
- Recommended for extremely dusty conditions
- ART-NR.

790.06.922.000









206  
207







# TOOLS TRANSPORTATION

TOOLS  
STANDS  
TRANSPORTATION

## TOOLBOX

38-piece, 1/4" toolbox in orange with high-quality, chrome-vanadium tools.

Volume:

- Ratchet (with locking device), lever, two extensions and socket wrench
- Hexagon sockets from 4 to 14

ART.-NR.

000.29.098.300

- Allen keys from 3 to 8

- Phillips, slotted and Torx bits

With this, small jobs on your KTM can be completed quickly and reliably. Whether you're removing fairings or changing the oil, you'll definitely find the right tool here.



## TOOLBOX

60-piece, 3/8" toolbox in orange with high-quality, chrome-vanadium tools.

Volume:

- Ratchet (with locking device), lever, two extensions and socket wrench
- Hexagon sockets from 6 to 24

ART.-NR.

000.29.098.400

- Allen keys from 3 to 10

- Phillips and slotted bits

- Torx bits from 15 to 55

With this, small jobs on your KTM can be completed quickly and reliably. Whether you're removing fairings or changing the oil, you'll definitely find the right tool here.



## TORQUE WRENCH

High-quality, adjustable torque wrench 5-25 NM, including the following accessories:

- Push-on spoke wrenches in sizes 5.65 and 6.95 mm

ART.-NR.

000.29.996.000

- Push-on ratchet 1/4"

- Ratchet attachments: 6, 8, 10 mm socket wrench, 15 Torx





## TOOL BAG

- The optimum solution for always having the most important tools to hand when on the road

ART.-NR.  
583.12.078.000



## MULTI-PURPOSE TOOL

- The perfect alternative tool on the go
- Conveniently packaged in a small bag you can use the tool for following fittings:
  - 14, 12, 10, 8 mm hexagon sockets
- 6, 8, 13 mm socket wrench
- Inserts for slotted and Phillips screw heads, 5 mm/6 mm Allen keys, 25/30 and 40/45 Torx
- Bottle opener
- Option for attaching for 3/8" and 1/4" socket wrench

ART.-NR.  
000.29.997.000



## SCREW SELECTION

125 / 150 SX	07 - 21	SX-F	07 - 21
250 SX	07 - 21	EXC / XC-W	08 - 21

- Contains all the most-used bolts and small parts for current Offroad models

ART.-NR.  
000.29.999.300

- 30% saving compared with purchasing individual parts



TIRE LEVER

There's racing experience here as well!  
Practical tire iron:

- Short version ideal for the portable tool bag
- Long version for minimum effort

ART.-NR.  
510.12.092.000 (1 | LONG) 510.12.093.000 (1 | SHORT)

TIRE LEVER KIT

- Made of high strength, orange anodized aluminum;  
not suitable for tire mounting with mousse

- With integrated ring wrench spanners 32, 27, 17, 13 and 10 mm

ART.-NR.  
781.29.984.000

BEAD BUDDY

- The Bead Buddy acts as your third hand when fitting tires  
- Holds the tire in the tire bed, thereby making tire fitting much easier

- Simply hook it into the spokes and away you go
- Particularly recommended for tire fitting with mousse

ART.-NR.  
000.29.901.000

COMBINATION TOOL

SX/XC 07 - 21 SX-F/XC-F 07 - 21

- Recommended tool for removing the screw caps

- Fits all closed cartridge forks

ART.-NR.  
000.29.016.000 (CLOSED CARTRIDGE)

SPANNER WRENCH

125 / 150 SX 16 - 21 SX-F / XC-F 16 - 21 XCF-W/EXC-F 17 - 21  
250 SX / XC 17 - 21 XC-W 17 - 21

- Practical tool for adjusting the preload of the shock absorber  
without needing to remove the shock absorber

ART.-NR.  
796.19.910.000





## SPOKE WRENCH

(1) 6 mm and 6.8 mm

(2) 5 mm and 5.6 mm

ART.-NR.  
772.12.991.100 <sup>(1)</sup>

50 / 65 **SX**

ART.-NR.  
000.29.020.000 <sup>(2)</sup>



## CHAIN BREAKER

5/8 x 1/4

ART.-NR.  
579.29.020.000



## SAG SCALE

– Makes setting the sag significantly simpler

– Folding version for easy stowing in the tool box

ART.-NR.  
000.29.090.100



## SAG SCALE PIN

**SX / XC** 13 - 21

– Extra pin for using the sag scale  
with larger axle diameters

ART.-NR.  
000.29.990.010



## CHAIN GAUGE

– Patented gage for two important checks:  
– Check and adjust chain tension

– Check chain lengthening (wear)

ART.-NR.  
000.29.920.000 / EB



## SPRING HOOK

– Simple spring removal

ART-NR.  
503.05.017.000 / C1



## WHEEL ALIGNMENT GAUGE

– The ideal tool for checking perfect wheel position  
when tensioning the chain

ART-NR.  
583.10.025.000



## FEELER GAUGE

– 100 mm length

– 20 blades: 0.05–0.1–0.15–0.2–0.25–0.3–0.35–0.4  
– 0.45–0.5–0.55–0.6–0.65–0.7–0.75–0.8–0.85–0.9  
– 0.95–1.0 mm

ART-NR.  
791.29.941.000



## SCREW PAN

– Magnetic  
– Never lose a bolt again

– Perfect for use in combination  
with the SX stand

ART-NR.  
780.29.962.000 / 30





## WIRE PLIERS

– Recommended, very practical, high quality tool to help you twist safety wire 548.12.016.000 like a professional

ART.-NR.  
000.29.015.000



## SAFETY WIRE

– 200 m wire with 0.61 mm diameter

ART.-NR.  
548.12.016.000



## CABLE TIE

– 100 pieces

– Length: 20 cm

ART.-NR.  
U6.951.130



## SCREWDRIVER KIT

– High quality, 5-piece screwdriver set in the KTM design

ART.-NR.  
000.29.098.200



## FORK PUMP

- Pump for adjusting fork air pressure on the air fork

ART.-NR.

794.12.966.100



## TIRE PRESSURE GAUGE

- Comfortable and easy to use
- Fits all standard valves
- Pressure display in bar or psi
- Integrated pressure release valve for accurate pressure adjustment
- Disengageable display and work area lighting
- Energy-saving function with automatic cut-off
- Maximum measuring pressure: 60 psi

ART.-NR.

773.29.068.000



## TIRE PRESSURE GAUGE

- Easy to use
- Measuring range 0 - 60 psi
- Clamping head rotatable through 90° on a flexible stainless steel feed line
- The valve shaft is therefore accessed easily and quickly
- Very accurate measurements by way of a durable internal membrane
- Internal pressure is reduced after use by a relief valve (push button)

ART.-NR.

U695.1099



## FOOT PUMP

- Small and light, so very portable – saves the day in the event of a puncture on the move
- Mini-footpump with pressure gauge on the swiveling valve head that fits all prevalent valves
- Integrated double-cylinder with pressure switch-over to high pressure. Maximum 12 bar / 160 psi
- Height: approx. 170 mm folded together

ART.-NR.

773.12.030.000





## BATTERY CHARGING AND TESTING UNIT

450 SX-F	16	XC-F	16 - 21	XCF-W / EXC-F	17 - 21
SX-F	17 - 21	250 / 300 XC	17 - 21	150 / 250 / 300 XC-W	17 - 21

- Specially developed for LiFePo4-batteries
- Voltages 13.2 V
- Charging current – 2.5 amps

- Optimizes battery performance and service life
- Recovery mode for low battery voltage
- Precise battery monitoring

ART.-NR.

796.29.974.500



## BATTERY CHARGING AND TESTING UNIT

- A must for every workshop/garage
- Testing, charging and keeping batteries fresh made easy
- Fully automatic and economical battery charging by means of programmed charge characteristic
- Clear LC display shows charging level. Reverse polarity protection, short-circuit protection, overload protection

- Adapter for UK: 584.29.074.001
- Adapter for AUS: 584.29.074.002
- CAUTION: The battery charger must not be connected to lithium-ion batteries for longer than 24h, lithium-ion batteries are also not suitable for trickle charging

ART.-NR.

584.29.074.100



PLUG

– Keeps water out of the silencer during cleaning

ART.-NR.  
**790.12.030.000 / 04** (1 | 37 MM – 62 MM)      **790.12.030.100 / 04** (2 | 15 MM – 38 MM)



AIR FILTER COVER

– Helps protect the intake system against water and dirt when cleaning the air filter box

50 <b>SX MINI</b>	09 – 21	65 <b>SX</b>	98 – 21
50 <b>SX</b>	09 – 21		

ART.-NR.  
**452.06.998.000 / 04**      **463.06.998.000 / 04**



85 <b>SX</b>	18 – 21	125 / 150 <b>SX</b>	16 – 21	<b>XC-W</b>	17 – 21
		250 <b>SX/ XC</b>	17 – 21	<b>XCF-W/EXF-F</b>	17 – 21
		<b>SX-F/ XC-F</b>	16 – 21		

ART.-NR.  
**472.06.998.000 / EB**      **790.06.998.100 / 04**

FORK SEAL DOCTOR

– This clever tool is a must for every motorcycle toolbox	– This tool extends the life of your seals many times over
– With it, you can remove dirt from your fork seals effortlessly	– For all 48 mm forks
– No matter whether it's in the garage or directly at the racetrack	

ART.-NR.  
**781.29.994.000**



MUD REMOVAL TOOL

– Use this to remove the dirt from your last mud battle with ease	– A motorcycle grip rubber (not included) can be fitted to the grip
-------------------------------------------------------------------	---------------------------------------------------------------------

ART.-NR.  
**548.29.035.000**





## OIL BOTTLE

Perfect for all 2-stroke riders on the move.  
The small bottle fits in your tool bag or jacket.

Capacity 250 ml, with scaling for different mixture ratios  
(1:40/2.5%; 1:50/2%; 1:60/1.7%; 1:80/1.25%).

ART.-NR.

780.29.065.000 / 04



## WASH CAP SET

250 / 350 <b>SX-F</b>	11 - 21	250 / 300 <b>XC-W TPI</b>	19 - 21	<b>FREERIDE</b> 350 / 250 <b>F</b> - 21
450 <b>SX-F</b>	13 - 21	250 / 350 / 450 / 500 <b>EXC-F</b>	12 - 21	

– Use highly recommended when washing the bike thoroughly;  
in other words, when the fuel tank is removed

– Prevents water from entering the fuel line

ART.-NR.

812.12.016.100



## SPARK PLUG BOX

– With space for storing fuses

ART.-NR.

780.29.064.000 / 04



## MEASURING CUP

– With scaling for both the fluid level  
and different mixture ratios

– Perfect for changing the oil and for preparing larger  
quantities of 2-stroke mixture in the canister

– Simple handling thanks to the ergonomic design

ART.-NR.

780.29.063.000



KTM MOTOREX CO-BRANDED PRODUCTS ARE THE DIRECT RESULT OF A DECADE-LONG RACING AND DEVELOPMENT PARTNERSHIP BETWEEN KTM AND MOTOREX. THE RESEARCH AND DEVELOPMENT OVER THE YEARS RESULTS IN THE ABSOLUTE BEST OIL AVAILABLE FOR YOUR KTM MOTORCYCLE.

### MOTOREX CROSS POWER 4T 10W/50

ART.-NR.  
U6.920.022 (1L/10)  
U6.913.023 (4L/4)  
U6.913.024 (DRUM)

### MOTOREX CROSS POWER 4T 10W/60

ART.-NR.  
U6.920.025 (1L/10)



### MOTOREX CROSS POWER 2T PREMIX

ART.-NR.  
U6.920.026 (1L/10)



### MOTOREX CROSS COOLANT 3.0

ART.-NR.  
U6.920.035 (1L/10)



### MOTOREX POWER SYNT 4T 10W/50

ART.-NR.  
U6.920.032 (1L/10)  
U6.913.033 (4L/4)



### MOTOREX TOP SPEED 15W/50

ART.-NR.  
U6.920.027 (1L/10)





## MOTOREX BRAKE FLUID 5.1

ART.-NR.  
U6.913.031 (250 ML)



## MOTOREX AIR FILTER CLEANER

ART.-NR.  
U6.953.020 (1L/12)  
U6.953.021 (4L/4)



## MOTOREX MOTO CLEAN

ART.-NR.  
U6.913.036 (1L/6)



## MOTOREX AIR FILTER OIL

ART.-NR.  
U6.913.030 (1L/12)



## MOTOREX OFFROAD CHAIN LUBE

ART.-NR.  
U6.913.028 (500ML)



LIFT STAND

- Available in two different heights
- Maximum load: 330 lbs

ART.-NR.	SUPERMOTO
781.29.955.100 (315 / 425 MM)	789.29.955.100 (260 / 370 MM)



PLUG-IN STAND

- Stabilizes the motorcycle during transport
- After transport, the tool serves as a perfect plug-in stand!

50 <b>SX</b>	- 21	65 <b>SX</b>	03 - 21	<b>SX/XC</b>	03 - 21
		85 <b>SX</b>	03 - 21	<b>SX-F/XC-F</b>	03 - 21
ART.-NR.				<b>XC-W</b>	03 - 21
451.03.023.300		ART.-NR.		<b>XC-F-W/EXC-F</b>	03 - 21
		470.03.020.000		ART.-NR.	
				777.03.020.000	



BIKE STAND

- High quality plastic stand designed especially for KTM offroad bikes. Special features:
- Two different heights possible
- Can be used as a stand for the quickfill system
- Storage space for the front and rear axle when removing the wheels
- Attachments for the following parts: mud removal tool, exhaust plug, magnetic bolt pan and various tools (not included)

ART.-NR.
780.29.155.000

BIKE STAND KIT

- High quality plastic stand designed especially for KTM offroad bikes
- Complete with mud removal tool, exhaust plug and magnetic bolt pan
- Screw driver kit sold separately

ART.-NR.
780.29.155.100





## MULTI PLUG-IN STAND

SX/XC  
SX-F/XC-F

XC-W  
XCF-W/EXC-F

Plug-in stand and fork support, combined in one unit:

- Two tools in one, saves space during transport of your bike
- Stabilizes the motorcycle during transport

- Helps protect the fork shaft sealing rings and fork springs against damage, which may otherwise be caused by being tied down with too much force during transport
- After transport it serves as the perfect plug-in stand.

ART.-NR.

790.29.094.000



## MATRIX BIKE STAND

- Aluminum construction with a non-slip pad

- Powder-coated orange

ART.-NR.

UPP.15.29.010



## MATRIX BIKE STAND MINI

50 SX

65 SX

85 SX

- Mini stand made especially for 50 / 65 / 85 SX models
- Aluminum construction with a non-slip pad
- Powder-coated orange

- The top is wedge shaped and solid so the bike doesn't slide around while washing

ART.-NR.

UPP.15.29.011





## FUNNEL

– Funnel specially developed for KTM motorcycles

– Diameter (small and large) optimized to suit the filler neck;  
special groove for optimum ventilation

ART.-NR.

590.29.050.000



## PLASTIC DRUM

– Transparent plastic canister including  
a flexible hose and screw cap

– For legal reasons, not to be used in some countries  
for storage and transportation of gasoline

ART.-NR.

□ 781.12.973.000 / 99

■ 781.12.973.000



## CABLE RING

– Easy handling and operation  
– Less wear on the cord

– Made of high quality material  
– Cable not included

ART.-NR.

000.29.940.000 (400 MM)



## SOFT TIE DOWNS WITH CLIPS

- Our KTM tie-downs feature built-in soft tie loops that allow you to secure your KTM without scratching your handlebars
- These extra wide webbing units feature a clip hook on one end, plus high-quality friction lock fasteners
- KTM orange /black with distinctive KTM PowerParts logos

ART-NR.  
U691.0047



## SOFT TIES

- These tough KTM soft ties allow you to strap down your bike without scratching your handlebars or tank
- Built from a durable ballistic nylon, they have a 615 lbs. weight capacity.
- Black with distinctive KTM PowerParts logos
- Dimensions: 1.5" x 24"

ART-NR.  
U691.0049



## SOFT TIE DOWNS WITH HOOKS

- Our KTM tie-downs feature built-in soft tie loops that allow these tie-down straps to have soft ties built in, so you don't scratch your bars.
- KTM orange / black with distinctive KTM PowerParts logos

ART-NR.  
U691.0046



## SOFT TIE DOWNS WITH RATCHET

- These tie downs offer the convenience of a soft tie with the additional benefit of a ratchet
- Extra wide hooks allow you to secure your bike easily. Great for hauling heavier motorcycles
- KTM orange/black with distinctive KTM PowerParts logos

ART-NR.  
U691.0048



## BIKE RAMP

- High quality, folding aluminum ramp
- Including straps for secure attachment on loading
- Weighing in at 12 lbs
- It withstands a load of 400 lbs
- The total length is approx. 6'6", folded approx. 3'3"

ART-NR.  
U6.951.277





## BRAKE LOCK

- Practical help when loading the bike or jacking up with the rear wheel lifting device

ART.-NR.

610.12.016.000



## GRIP PROTECTION SET

- Prevents dirty grips

ART.-NR.

SXS.05.125.600



## TRANSPORT COVER

- For rear sprockets up to 50T and 220 mm–260 mm brake discs

ART.-NR.

548.12.004.000



## FORK SUPPORT

- Stabilizes the motorcycle during transport
- Helps protect the fork shaft sealing rings and fork springs against damage due to tension belts being tightened too much

- Is clamped between the bottom of the front fender and tire

ART.-NR.

548.29.094.100



## SERVICE PIT MAT

- This mat is already mandatory for many races
- The special material mix absorbs overflowing fuel
- The mat also facilitates the retrieval of tools, screws and other small parts during service work
- Rubberized back
- The special KTM design will cause a sensation in your service zone
- Size: 5' x 3'3"

ART.-NR.  
780.12.006.000



## SERVICE PIT MAT

- This mat is already mandatory for many races
- Complies with FIM regulations
- The special material mix absorbs overflowing fuel
- The mat also facilitates the retrieval of tools, screws and other small parts during service work
- Rubberized back
- The special KTM design will cause a sensation in your service zone
- Size: 3'3" x 5'6"

ART.-NR.  
790.12.906.100



## PIT BOARD

- To display the most important information to the rider
- Including white marker pen to write on black backside

ART.-NR.  
790.29.930.000





## U-LOCK

- High-quality U-lock made from hardened steel with a double locking mechanism
- Locking cylinder with optimum protection against any attempts at manipulation
- Two keys supplied as standard
- Includes rotating PVC cover that protects the cylinder lock from dirt

ART.-NR.

600.12.016.000



## PROTECTIVE OUTDOOR COVER

- Guaranteed perfect protection in all seasons
- Made of exclusive, pigmented fabric
- Includes practical carrying bag
- Helps protect the motorcycle from dust, scratches and the like

ART.-NR.

613.12.007.000



## PROTECTIVE OUTDOOR COVER

- Guaranteed perfect protection in all seasons
- Made of exclusive, pigmented fabric
- Includes practical carrying bag
- Helps protect the motorcycle from dust, scratches and the like

ART.-NR.

590.12.007.000



## PROTECTIVE INDOOR COVER

- The indoor bike cover makes every KTM an eye-catcher in the garage
- Helps protect the motorcycle from dust, scratches and the like
- Completely dust and dirt-impermeable fabric
- Material with special structure
- The inside is softly padded

ART.-NR.

625.12.007.000



#### LEGAL DISCLAIMER

*KTM North America, Inc. reserves the right, without prior notice and without specifying reasons, to amend technical specifications, fittings, scope of supply, colors, materials, services offered and provided, etc., or to discontinue them without replacement, or to stop manufacturing a particular product.*

*All information concerning the scope of supply, appearance, services, dimensions, and weights is non-binding and specified with the condition that mistakes, printing, setting, and typing errors may occur; such information is subject to change without notice.*

*All of the items in this catalog have been designed/developed especially for the needs and demands of offroad motorsport. This is why only those KTM PowerParts, where it is explicitly stated to that effect, are approved for use in traffic ("homologized for street use"). The items in this catalog have been developed and are intended for closed course competition use and racing applications only. Any other usage violates U.S. Federal and/or state law and could be subject to fines. Only items explicitly designated to be "50 State Legal" have been developed and are approved to meet U.S. Federal and California emission requirements for highway/on-road use.*

*DO NOT attempt to imitate the illustrated riding scenes. The riders illustrated are professional motorcycle riders. The photos were taken on closed racing circuits or closed roads. KTM wishes to make all motorcyclists aware that they need to wear the prescribed protective clothing and always ride in a responsible manner in accordance with the relevant and applicable provisions of the road traffic regulations. Only homologated versions of motorcycles promoted in this catalog are suitable for on road use. Some products in the KTM PowerParts range are not approved for use on public roads in certain circumstances (varies from country to country). Please note that model specifications may vary from country to country. The statutory warranty of the respective country applies.*





KTM PowerParts make it possible to intensify your individual style and performance on the street and on the track. Discover the options available for your KTM by visiting your nearest authorized KTM Dealer or visit:  
**[www.ktm.com/ktmpowerparts](http://www.ktm.com/ktmpowerparts)**

READY   
TO RACE

www.kiska.com

Art.Nr.: 2021006NA

Photos: R. Schedl, P. Plazer, F. Montero, H. Mitterbauer, C. Urkauf, S. Cudby, KISKA GmbH



© 2020, KTM NORTH AMERICA, INC.



**KTM NORTH AMERICA, INC**  
1119 MILAN AVENUE, AMHERST, OH 44001  
38429 INNOVATION COURT, MURRIETA, CA 92563  
8701 RUE SAMUEL-HATT, CHAMBLY, QC J3L-6V4  
[WWW.KTM.COM](http://WWW.KTM.COM)

**KTM POWERWEAR** **KTM POWERPARTS**

